

CHESS

DIAGRAM 1

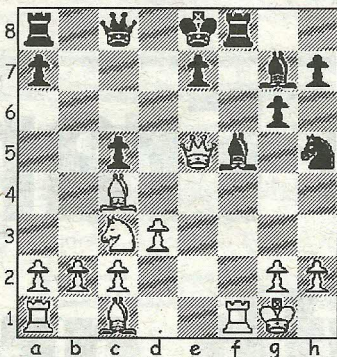
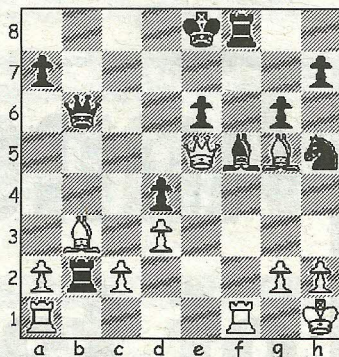


DIAGRAM 2



DESPITE three creditable results in their final 4NCL Division 2 Promotion Pool matches, Wessex 1 could only reach a 6/14 score to end the season in mid-table once again. The closing weekend started well with a 5-3 victory over Barbican Youth, but this was followed by two drawn matches against Rhyfelwyr Essyllwg and Anglian Avengers, who were one of four teams promoted, alongside Jutes of Kent, Bristol 1 and Guildford A&DC 2.

There was to be similar disappointment in Division 3 where Wessex 2 finished in seventh place on a final 15/22 score after heading the table with three rounds to go. The team lost a close opening contest 2.5-3.5 against Spirit of Atticus and then went down heavily 1.5-4.5 to FCA Solutions 1, before recovering to end the season with a 3.5-2.5 victory over The Rookies.

The following game, taken from the Bournemouth Individual Swiss event, is the critical last round encounter between Allan Pleasants, requiring a half-point for the title, and Ian Clark who had to win in order to leapfrog his opponent.

Clark, I - Pleasants, A  
Bournemouth Swiss, 2011  
Closed Sicilian (B23)

1.e4 c5 2.Nc3 Nc6 3.f4 g6 4.Nf3 Bg7 5.Bc4 d6 The main line alternative is 5...e6, vacating the e7-

square and thereby allowing the knights to work in tandem. 6.0-0 Nd4 7.d3 Bd7 Whilst 7...Bg4? loses a pawn after 8.Bxf7+ Kxf7 9.Ng5+, development of the bishop isn't really a priority, therefore 7...e6 and a reversion to the main line is preferable. 8.f5 Nxf3+?! With the f-file about to be opened, this move only serves to aid White's control of it... 9.Qxf3 Nf6 10.fxg6 fxg6?...and recapturing the pawn away from the centre before castling hands White an attacking opportunity he cannot resist.

11.e5!? dxe5 12.Qxb7 Qc8 13.Qf3 Rf8 Central pawns in a mess, with his king condemned to an exposed existence behind them, there is no option for Black other than contesting the open file. 14.Qe2 Bf5 15.Qxe5 Nh5 (Diag1) 16.Qe1 Safety first and not quite as clinical as 16.Qd5 a6 (16...e6 17.Qd6 a6 18.Be3+-) 17.Nb5! Rb8 18.Nd6+! exd6, when 19.Qxd6 is crushing. 16...Rb8 17.Bg5 Bd4+ 18.Kh1 e6 19.Nb5 Adopting a liquidation policy that, due to the threat of 20.Nd6+, Black has to accept. 19...Qc6 20.Nxd4 cxd4 21.Qe5 Rxb2 Material equality may be restored, but White's position is far superior, as the next couple of moves and Black's immediate resignation confirms. 22.Bb3 Qb6 (Diag 2) 23.Bc1! 1-0

● Any enquiries regarding the Chess column should be addressed to Alan Dommett by emailing a.j.dommett@btinternet.com