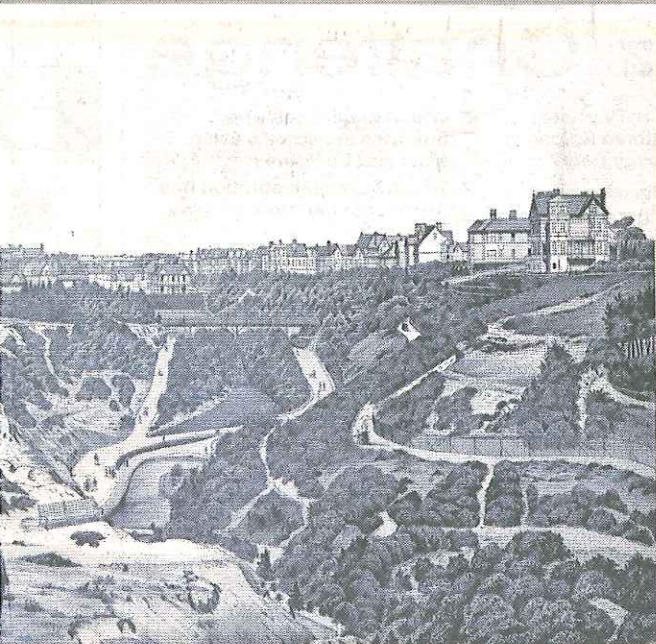


SHOTS

THE PAST

00s



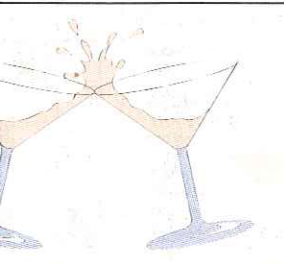
BOSCOMBE GARDENS.

Garden glories

A beautiful black and white illustration of Boscombe Gardens in Victorian times was brought in by Robert Wilson of Wilton Road, Boscombe.

Much attention to detail has been given to the buildings in the background, the shrubbery and the figures enjoying a stroll in the gardens.

Illustration by Robert Wilson, Daily Echo, Richmond Hill, Bournemouth, BH2 6HH
nicola.horsfield@bournemouthcho.co.uk
 can be sent at 200dpi and no less than 500kb in size



WISHES

...ta's safely back in his den
 to think of 2010.
 ... month to fight the chills
 up warm and stop the ills.
 ...ns made must last the

to help others and bring
 er.
 e you feel, your chest will

*But what I wish for 2010
 Is peace on earth and goodwill to men.
 So let's work for love and to forgive
 For a world of peace for all to live*

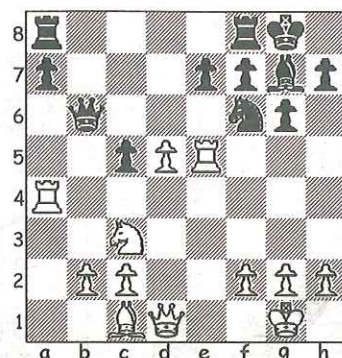
Steve Russell, Hamworthy

THE MAGIC OF WINTER WHITE

*Jack Frost worked his tricks last night,
 White lace and diamonds free.
 A puff of steam for every breath,
 Pearls on every tree.
 The puddled villages turned to crystal glass,
 Each footprint set like stone,
 Each woman and man so clearly tracked,
 A secret journey shown.*

CHESS by Alan Dommett

DIAGRAM 1



THE Southbourne Christmas tournament, attracting a significantly increased entry on previous years, has been won by Bruce Jenks (Lymington) with a 6/7 score, a half point ahead of Walter Braun (Southbourne), who finished a further half-point clear of Peter Wilcock (Wimborne).

The time handicap system once again proved effective and Phil Wallace (Wimborne) and Alan Reid (Southbourne) shared an early lead on 3/3 scores before the higher graded players settled into the format in the later rounds.

A mid-term review of the Bournemouth League provides strong evidence that an unbeaten Southbourne A side will retain the 1st Division title and, following Wimborne A's recent defeat at their hands, Ringwood A seem likely to be their closest rivals this season. Southbourne C lead in Division 2, but only by virtue of playing one more game than Wimborne C and a close contest is anticipated between these well-matched sides throughout the rest of the campaign. Poole B and Wimborne H lead Divisions 3 and 4 respectively while the newly-formed Division 5 looks set to be a battle between no fewer than five teams with Ringwood C currently at the forefront.

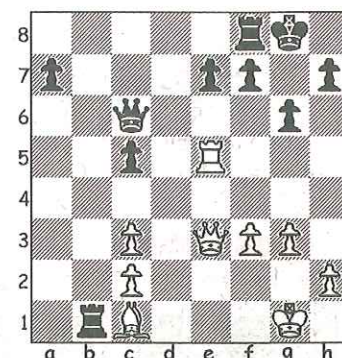
The following miniature is taken from Division 2 of the Dorset League and Wimborne's Chris Bellers provides a speedy crumb of comfort in a 1-3 home defeat against Dorchester.

Hardie, D – Bellers, C

Wimborne B v Dorchester B, 2009
 Sicilian Defence (B27)

1.d4 g6 2.e4 Bg7 3.Nf3 c5 4.d5 b5!?
 An interesting pawn advance that goes deeper than the simple bait line 5.Bxb5? Qa5+ 6.Nc3 Bxc3+, winning a

DIAGRAM 2



piece. Indeed, Black can take an entirely different course here with 4...d6 and transpose into a Schmid-Benoni. In Beaumont-Dunnington (Newport, 1998) play continued 7.Bb5+ Bd7 8.Bd7+ Nxd7 9.0-0 Ngf6 10.Nc3 0-0 and a quick draw was agreed. 5.a4 bxa4 6.Rxa4 Qb6 7.Nc3 d6 8.Bb5+ White is content to compete his development even though the following exchanges allow his opponent to free his queen-side minor pieces. 8...Bd7 9.Bxd7+ Nxd7 10.0-0 Ngf6 11.Re1 0-0 12.e5! White held the initiative with his advantage in space, but now cedes it by engineering a series of exchanges that only serve to improve Black's position.

12...dxe5 13.Nxe5 Nxe5 14.Rxe5 (Diagram 1) Qd6! A subtle move that appears to merely protect the e-pawn, but in fact contains a threat that White fails to spot. 15.Qe2? Missing Black's reply and losing the exchange in the process. Better was the counter-threat 15.Bf4!, whereupon 15...Qd7 16.Qe2 leads to equality. 15...Ng4! 16.Rxg4 Bxe5 17.Re4 Bxc3 18.bxc3 Rab8 The d-pawn can wait as Black grabs the open file and eyes the possibility of a nasty back rank pin on the bishop. White responds by giving his king some air. 19.g3 Qxd5 20.Re5 Qc6 21.f3 White anticipates the pin on the bishop and closes the long diagonal, hoping to defend against the mounting threats with his queen. However... 21...Rb1 22.Qe3 (Diagram 2) Qd6! ...Black finds the perfect reply and overloads the white queen with protective duties. With the dual threats of 23...Rxc1+ 24.Qxc1 Qxe5 and 23...Qd1+ 24.Qe1 Qxc1 in the offing, Black resigned.

Any enquiries regarding the Chess column should be addressed to Alan Dommett by emailing a.j.dommett@btinternet.com

MAY I QUOTE YOU?

● "She is a great lady, Carla, even if she doesn't look it" – a Parisian down-and-out, named Denis, who has been befriended by France's first lady Carla Bruni-Sarkozy.

● "The definite discovery of life on Mars, however primitive, could be the great discovery of the next decade – and will show that where life can appear, it will" – astronomer Sir

Patrick Moore, pictured.
 ● "I have five children, ranging in age from 14 to their 30s, by three mothers, so I guess you could call it a fractionalised family of sorts" – actor Robert de Niro.

enough roles for older women.

● "I was not unlike Frankenstein's monster" – actress Susan Penhaligon regrets having Botox.

● "No-one has the right to comment on China's judicial sovereignty" – Jiang Yu, spokeswoman for the Chinese foreign ministry.

Where in the world?

