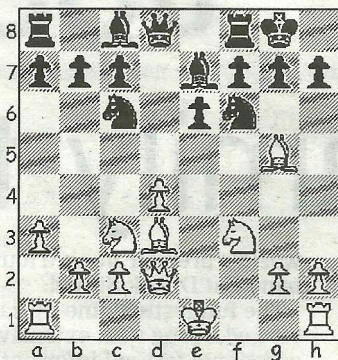


CHESS

by Alan Dommett

30 July 2011

DIAGRAM 1



THE first Dorset Mind Challenge chess competition is to be held at Kingston Maurward College, Dorchester on Friday 12th August. The event will start after the launch of the Phoenix Legacy Dorset Mind Challenge (4-6pm), an innovative project that aims to create a sustainable legacy increasing the mental well being of people over 50 in Dorset through greater brain stimulation and self care. Local league players wishing to attend can obtain full details from Rosie Barfoot (tel:- 01305 261540)

Entries are now being taken for the 46th Bournemouth Congress which takes place at the Bournemouth International Hotel, Priory Road West Cliff (Friday 14th to Sunday 16th October) and information on the various competitions can be obtained from Norman Mackie (tel:- 01202 721870)

The following game, taken from the Weymouth Open, the forerunner of the Bournemouth event, highlights the perils of excess pawn-grabbing when confronted by gambit play.

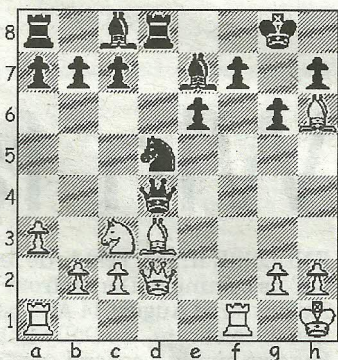
Simons, M - Spiller, P

Weymouth Open, 2004

Blackmar-Diemer Gambit (D00)

1.e4 d5 2.d4 dxe4 3.Nc3 Nf6 4.f3 exf3 5.Nxf3 e6 The Euwe Defence - a solid, cautious approach that is the natural choice of the player wishing to hold on to his pawn advantage. 6.Bg5 Be7 7.Qd2 0-0 8.Bd3 Nc6 The knight flatters to

DIAGRAM 2



deceive on this square, as a hollow threat to the d-pawn (9...Nxd4? 10.Nxd4 Qxd4?? 11.Bxh7++) matters less to White than potential harassment (9...Nb4) of the white-squared bishop. 9.a3 (Diag 1) g6 Up until this move we have been following Oesterle-Bogoljubov (Wangen, 1952) where White eased his way to a quick win against the GM after 9...h6? 10.Bxh6!, the thematic sacrifice proving too strong even in the highest of circles. Here, in contrast and in order to validate his attack on the d-pawn, Black accepts a weakening of the dark squares around his king... 10.0-0! ...only for White, in the true spirit of the gambit, to ditch it anyway! Nxd4 11.Nxd4 Qxd4+ 12.Kh1 Nd5 13.Bh6 Rd8 (Diag 2) 14.Bxg6! An effective and unusual BDG sacrifice at the point of the fianchetto and if Black should be in a rush to exchange queens, White completes a demolition of the kingside pawns with an intermezzo 15.Bxf7+ before recapture. 14...Nf6 15.Bd3 Threatening 16.Qg5+ followed by mate. 15...Nh5 16.Rf3 e5 17.Raf1 White's game now appears to play itself, whereas his opponent's pieces are uncoordinated and a blunder soon follows. 17...Be6 18.Bg5 Rd7?? 19.Bxe7 and it was here, realising 19...Rxe7 20.Qg5+ picks up the rook, that Black resigned.

● Any enquiries regarding the Chess column should be addressed to Alan Dommett by emailing a.j.dommett@btinternet.com