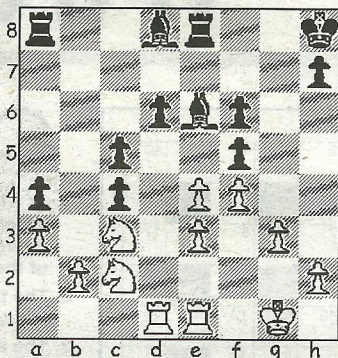


CHESS

by Alan Dommert

DIAGRAM 1



Southbourne A have rounded off another successful season with a 3-1 win against Weymouth A, a victory that secures the Dorset League 1st Division title and completes a fine double following the team's retention of the Bournemouth League Division 1 crown earlier in the month.

A close contest looked likely with points soon shared on the top two boards where Walter Braun and Martin Simons took on Allan Pleasants and Andrej Furjel respectively. However, Southbourne's strength in depth eventually tipped the balance in their favour with wins for Bruce Jenks over Frank Pittman and Len Laker against Steve Blake. The result took Southbourne to 10 points from their six matches played, four pts clear of second-placed Dorchester A, the only team to have defeated them during the campaign.

The following game, taken from the 4NCL Division 2 and Wessex 1's crushing 7-1 victory over King's Head, is a good example of how the advantages gained through active play can often outweigh the hindrance of doubled pawns.

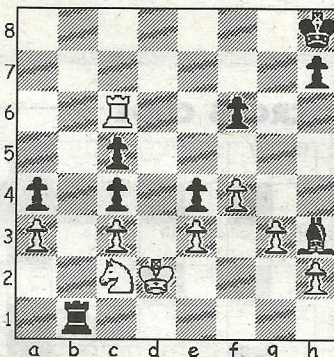
Thomas, R - Simons, M

4NCL Staverton Park, 2011

King's Indian Attack (A04)

1.Nf3 d6 2.g3 c5 3.Bg2 e5 4.d3 Nc6 5.c4 f5 6.Nc3 Nf6 7.0-0 White has taken a well-trodden path down the KIA road while his opponent veers away from theory at almost every turn, preferring to stake an early claim in the centre.

DIAGRAM 2



7...Be7 8.Rb1 0-0 9.a3 a5 The battalion of black pawns on the 5th rank are making their presence felt, leaving White little alternative but to persevere with his attempted expansion on the queenside. 10.Ne1 Qe8 11.Nc2 Qh5 12.e3?! Qxd1 13.Rxd1 a4 The removal of queens hardly helps White achieve his aim and this pawn advance is yet another impediment. 14.Bd2 Na5 15.Nd5 Bd8 16.Bc3 Kh8 Playing a waiting game and therefore, as neither minor piece capture aides White's cause, he tries to break the blockade... 17.f4 Re8 18.Re1 e4 ...once again without success, although the following exchange does at least make a mess of Black's kingside pawns. 19.Bxf6 gxf6 20.Bf1 Be6 21.Rbd1 b5!? Replenishing the 5th rank fixation, Black realises that the following liquidation benefits his own endgame chances despite leaving the rest of his pawns in tatters! 22.dxe4 Nxc4 23.Bxc4 bxc4 24.Nc3 (Diag 1) Ba5! The only supportive black pawn is sacrificed in order to make a telling breakthrough elsewhere. 25.Rxd6 Rab8 26.Ra6 Bxc3 27.bxc3 Rb2 28.Re2 fxe4 Regaining material and suddenly Black's more active pieces look menacing. 29.Rc6 Bh3 30.Rd2 No time to Hoover-up those pawns, as 30.Rxc5? Rd8 31.Ra5 Rd1+ 32.Re1 Rd2! is fatal, but Black still finds a clinical combination to wrap up the win. 30...Rb1+ 31.Kf2 Rf1+ 32.Ke2 Rb8 33.Rd1 Rxd1 34.Kxd1 Rb1+ 35.Kd2, (Diag 2) Bg4! and it was here, with no way of preventing 36... Rd1 mate without the loss of his knight, that White resigned.

● Any enquiries regarding the Chess column should be addressed to Alan Dommert by emailing a.j.dommert@btinternet.com