

29/10/11

DIAGRAM 1

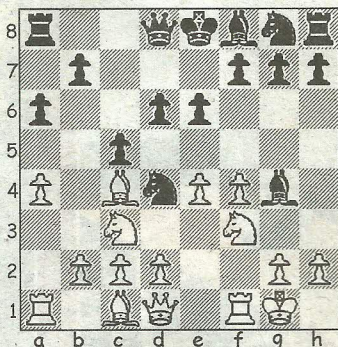
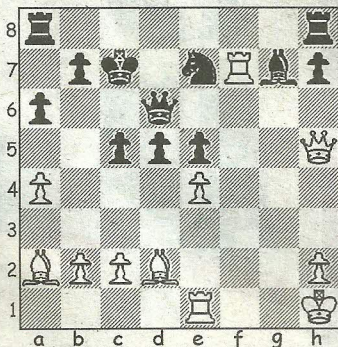


DIAGRAM 2



The 17th Dorset Rapidplay Championships take place tomorrow at Tuckton Social Club and a record entry has already been confirmed for this popular event. Due to the increase in numbers, there will be additional grading prizes awarded, as well as the usual array of cash and book prizes for rated Sections ranging from Under-170 through to Under-96 level and competitors are advised to arrive promptly for a 9.45am start.

The following game is taken from the recent Dorset Congress and features some inventive opening play from both sides that culminates in a decisive central attack on a vulnerable king.

Lyell, M - Wilcock, P

Dorset Open Congress, 2011

Closed Sicilian (B23)

1.e4 c5 2.Nc3 d6 3.f4 Nc6 4.Nf3 a6 Black delays his kingside development, preferring to test out the possibility of expansion on the opposite wing and place his white-squared bishop on the business side of the pawn chain. The main line alternative is **4...g6 5.Bc4 Bg7 6.0-0 e6 7.d3 Nge7**, which tends to result in a quieter opening altogether. **5.a4 Bg4 6.Bc4 e6 7.0-0 Nd4 (Diag 1) 8.d3?!**

Allowing Black a trade-off to shatter the pawn defences in front of his opponent's king. In Szokolczai-Parej (Hungary, 1992) White took a more pragmatic approach with **8.Be2** and, after **8...Nxe2+ 9.Qxe2 Ne7 10.h3 Bxf3 11.Qf3 Nc6 12.d3 Nd4**

13.Qf2 Be7 14.Be3 Nc6 15.f5, the smooth opening of the f-file provided a win in 32 moves. **8...Bxf3 9.gxf3 g6 10.Ne2 Nxe2+ 11.Qxe2 Ne7 12.Kh1** The white king is squirreled away before the natural f5-break is made. **12...Bg7 13.f5 d5?!** An unnecessary counter-thrust when **13...gxf5 14.Bg5 h6 15.Bh4 Qd7 16.Rae1 fxe4** would have been just fine for Black. **14.Ba2 gxf5 15.Bg5 f6 16.Bd2 Qd6 17.Rae1** The difference in terms of king vulnerability is clear to see, as White now threatens to prise open the e-file. Black responds with what amounts to a further weakening of his centre. **17...e5? 18.f4 fxe4 19.Qh5+** A neat intermezzo check, thereby making the black king's escape cumbersome, before proceeding with the pawn exchanges... **19...Kd8 20.dxe4 Kc7 21.fxe5 fxe5 22.Rf7!** (Diag 2) ...followed by a breakthrough on the 7th rank. Black must lose material, as after **22...Rhg8, 23.Qg5** targets both minor pieces whilst the ungainly **22...Bf8** loses to **23.Ref1 Re8 24.R1f6 Qd8 25.Qxe5**, when **26.Qb8+** and **27.Rd6** complete the mate. **22...Kb6 23.Rxg7 dxe4 24.Bc3 Ng6 25.Rd1 Qf6 26.Rf7** and it was here, confronted by the forced losing line **26...Qh4 27.Qxh4 Nxh4 28.a5+ Ka7 29.Rdd7 Rab8 30.Bd5**, that Black resigned.

● Any enquiries regarding the Chess column should be addressed to Alan Dommett by emailing a.j.dommett@btinternet.com