

29/1/11

DIAGRAM 1

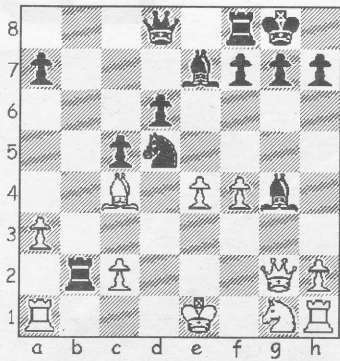
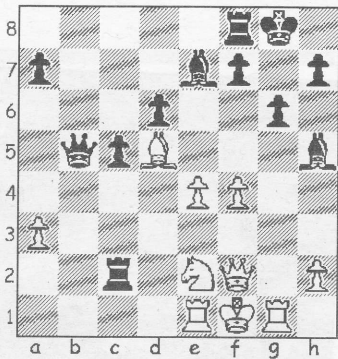


DIAGRAM 2



Wessex 1 have moved serenely into second place in the 4NCL Division 2 (pool B) table after picking up two wins in the latest round of matches. A crushing 6.5-1.5 victory over Guildford A&DC 2, against opposition that out-graded them over the 8 boards, was followed by a clinical shearing of Sambuca Black Sheep in a match that saw every board contribute towards a 5-3 winning margin.

Wessex 2 also added to the weekend success by defeating Guildford A&DC 4 and AMCA Hippos by the same 4.5-1.5 score line and they now find themselves comfortably placed in 5th position in a Division 3 table comprising 34 teams!

The following game is taken from Wessex 2's second round match against Hackney and Keith Gregory provides ample evidence that the defence adopted is a force to be reckoned with.

Reid, J - Gregory, K

4NCL Staverton Park, 2010
Pirc Defence (B07)

1.d4 d6 2.e4 Nf6 3.Nc3 Nbd7

This early knight move takes the Pirc away from its standard variations and into what is known as the Lion, a specialist defence that needs careful handling, especially in the more aggressive lines. However, here White adopts a quieter strategy in the initial

stages...**4.Be2 e5 5.Be3 Be7 6.Qd2 c6 7.f4...**before declaring his intention to open up the centre. After the less combative **7.Nf3** Black can take the initiative himself by continuing **7...Qc7** followed by **...h6/g5** in what is known as the Lion's Claw variation. **7...0-0 8.g4 b5!? 9.a3 exd4 10.Bxd4 c5 11.Bxf6 Nxf6**

12.Bxb5? White has to be better off playing the preparatory **12.g5**, whereupon **12...Nd7 13.Bxb5** gathers in the pawn without the complications that now arise.

12...Rb8 13.Bc4 Bxg4 Suddenly White appears vulnerable on both sides of the board, so he decides to let his b-pawn go and search of counterplay. **14.Qg2 Rxb2 15.Nd5?! Nxd5 (Diag 1) 16.Bxd5**

The alternative **16.Qxg4??** doesn't bear thinking about because of **Bh4+ 17.Kd2 Qa5+ 18.Qc1 Rxc2+!** and the carnage that follows. **16...Qa5+ 17.Kf1 Qb5+ 18.Ne2 Bh5** The dust settles, Black has maintained his pawn lead and threatens to double the advantage. **19.Rg1 g6 20.Re1** White is powerless to prevent the pawn dropping, as **20.Rc1 Rb1 21.Rxb1 Qxb1+** would have confirmed, but he is also running out

● Any enquiries regarding the Chess column should be addressed to Alan Dommert by emailing a.j.dommett@btinternet.com