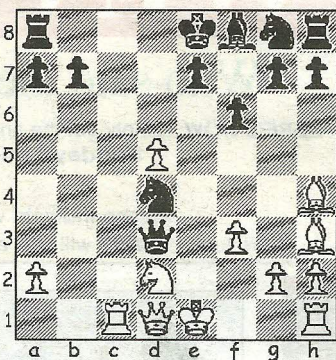


CHESS

by Alan Dommett

DIAGRAM 1



In a repeat of last season's finale Wimborne ended the current campaign by getting two teams through to the B&DCL Team KO final and, after achieving the required 3.5-2.5 score, Wimborne B duly retained the title. Both A and B teams had previously shown their expertise at this form of the game with excellent semi-final wins against Southbourne and Highcliffe respectively.

Sadly for Highcliffe, they could not field the same team as in the opening round and had to incur an average nominated grade penalty that proved costly due to an additional point being required. Southbourne also had to find a couple of late reserves, thereby making the required score too much of a mountain to climb against an in-form Wimborne side.

Semi-final results (required scores in brackets):- Wimborne A 2.5-3.5 Southbourne (0.5-5.5) Highcliffe 2.5-3.5 Wimborne B (2.5-3.5) The following miniature is taken from the 4NCL and features a remarkably successful, if somewhat unusual, defence by a winner who was out-graded by almost 200 points.

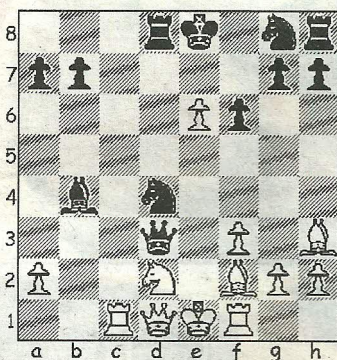
Povah, N - Josse, M

4NCL Wokefield Park, 2011

Irregular Queen's Pawn Opening (D00)

1.d4 d5 2.Bg5 f6!? White had probably hoped for an easy transition (via 2...c6 or 2...Nf6) to any one of a number of openings, therefore this blunt

DIAGRAM 2



response must have come as quite a surprise. **3.Bh4 c5 4.e3 Nc6 5.c4?!** An over-combative move that leads to immediate problems. In Landenberger-Finzer (Wiesbaden, 1998) White was far more circumspect and played the supporting 5.c3, although, after 5...cxd4 6.exd4 Bf5, Black was able to potter along to a dreary draw in 67 moves. **5...cxd4 6.exd4 Qb6!** Seizing the initiative by forcing White into an early exchange he can ill-afford, so **...7.cxd5 Nxd4 8.Bd3 ...**rather than delay development on the kingside, the b-pawn is sacrificed. **8...Qxb2 9.Nd2 Qc3 10.Be4 Bf5 11.Ne2!?** An interesting attempt to secure some counterplay for the pawn, despite the fact that Black now negotiates his way through the muddied waters. **11...Nxe2 12.Bxf5 Nd4 13.Rc1 Qa3 14.Bh3** Both bishops may be out on a limb, but this retreat is better than the ultra-passive 14.Bb1, which is needless as 14...Qxa2?! 15.Nc4!/? embarrasses the advanced knight. In any event, Black ignores the pawn, preferring to target White's exposed king instead. **14...Qd3 15.f3 Qe3+ 16.Kf1 Qd3+ 17.Ke1 (Diag 1) e5!** Declining the draw by repetition against the more experienced player, Black is about to be rewarded for his bravery. **18.dxe6 Bb4 19.Bf2 Rd8 20.Rf1!?** (Diag 2) A huge blunder that leaves White powerless to avoid a mating net. **20...Bxd2+ 21.Qxd2 Nxf3+!** and with no way of avoiding 22.gxf3 Qxd2 mate, White resigned.

● Any enquiries regarding the Chess column should be addressed to Alan Dommett at a.j.dommett@btinternet.com