

CHESS

DIAGRAM 1

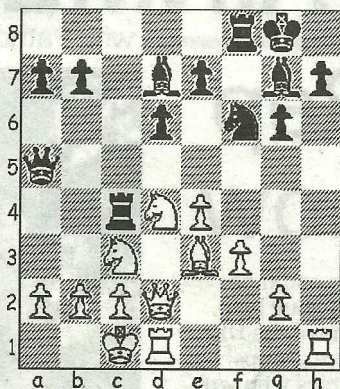
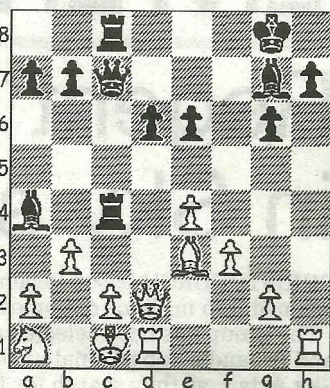


DIAGRAM 2



THE new season begins in earnest next month with the traditional opener, the Two Towns Match between Bournemouth and Poole, taking place at the Royal British Legion Club, North Road, Poole on Tuesday 13th September (7.30pm start). This event will not be graded, unlike the Inter-County Jamboree which is to be held be at Taunton on Sunday 18th September where Dorset will defend the title they won by such an impressive margin last season. Five counties compete in this tournament and Dorset captain John Kelly will be informing individual team members of selection over the next few weeks.

The following game is taken from the British Championships and Southbourne's Bruce Jenks marshals his forces expertly for a clinical attack on a heavily-guarded enemy king.

De Coverly, R - Jenks, B
British Championship Sheffield,
2011
Sicilian Dragon: Yugoslav Attack
(B77)

1.e4 c5 2.Nf3 g6 3.d4 cxd4
4.Nxd4 Bg7 5.Be3 Nc6 6.Nc3 Nf6
7.Bc4 0-0 8.Bb3 d6 9.f3 Na5 This
knight on the rim is far from dim
because it eyes either the removal
of the white-squared bishop or,
with further support, a c4 outpost.
The main line alternative here is
9...Bd7 10.Qd2 Rc8 11.0-0-0 Ne5,

which can transpose, but without
having the option to capture.
10.Qd2 Bd7 11.h4 Rc8 12.h5 Nc4
13.Bxc4 Rxc4 14.hxg6 fxg6
15.0-0-0 Both players are now set
to use open c and h-files
respectively, an attacking game
being virtually guaranteed by the
castling on opposite wings.
15...Qa5 (Diag 1) 16.Nb3 In Crnic-
Malmqvist (Jonkoping, 1998)
16.Bh6? was tried, only for Black to
unleash 16...Nxe4! and after
17.Nxe4 Qxa2 18.Nc3 Qa1+
19.Nb1 Rxd4 20.Qe2 Rxd1+
21.Rxd1 Bxh6 White suffered a
quick defeat. 16...Qc7 17.Nd5
Nxd5 18.Qxd5+ e6 19.Qd2 A
necessary retreat, as 19.Qxd6??
Rxc2+ 20.Kb1 Rxb2+ ends in a
back rank mate, but...19...Rc8
20.Na1?...this over-protection of
the c-pawn is just too cramping
and Black finds a neat exchange
sacrifice that takes full advantage
of the situation. 20...Ba4 21.b3
(Diag 2) Bxa1! 22.bxc4 Qxc4
23.Qd3 Qxa2 24.Kd2 The
threatened mate leaves no time to
recover the pawn and White is
simply powerless to prevent further
material loss right along his second
rank. 24...Rxc2+ 25.Ke1 Rxc2
26.Rc1 Bc6 and finally the door is
shut firm on any counterplay, the
added restriction leading to White's
resignation a few moves later.

● Any enquiries regarding the
Chess column should be addressed
to Alan Dommett by emailing
a.j.dommett@btinternet.com