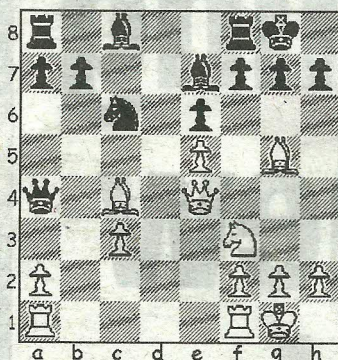


CHESS

by Alan Dommett

26/11/11

DIAGRAM 1

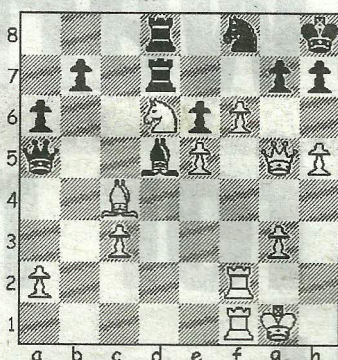


WIMBORNE A have made the best possible start to the new Dorset League Division 1 season by beating both Dorchester A and Southbourne A by a 2.5-1.5 margin in their opening two matches. The latest victory against Southbourne may have been marred by a mixture of poor play and blunders, but the final outcome could not have been better for the away team. Dave Olney registered the first point for Wimborne when Graham White lost a piece after the tea interval, whereupon Phil Taylor-Bowd completed an 18-move rout with his Grand Prix Attack against Len Laker.

Further problems followed for the home side when Martin Simons also caught the blunder bug to drop a piece when the exchange ahead, an aberration that led to Ian Clark accepting a draw to secure the match. Finally, in keeping with an unusual evening, Bruce Jenks improved Southbourne's game difference after Steve Peirson contrived to give material away in a symmetrical English.

The following game is taken from the 4NCL Division One Section A where last year's runners-up Wood Green Hilsmark Kingfisher 1 (WGHK) were victorious in both opening matches. In the first round they were restricted to a 5-3

DIAGRAM 2



victory over newly-promoted Anglian Avengers and GM Stephen Gordon suffered this surprise defeat against an opponent with an ELO rating over 300 points below his own.
Spence, D - Gordon, S
4NCL, Staverton Park, 2011
Sicilian: 2.c3

1.e4 c5 2.c3 Nf6 3.e5 Nd5 4.d4 cxd4 5.cxd4 d6 6.Nf3 Nc6 7.Bc4 e6 8.0-0 Similar to the opening from last week's Dorset Rapidplay game except that White, not having deferred development with an a3 advance, prefers to castle. 8...Be7 9.Qe2 0-0 10.Nc3 Nxc3 11.bxc3 dx5 12.dxe5 Qa5 13.Qe4 Qa4 Even though the isolated c-pawn was hanging a capture would have been risky due to 14.Bd2 Qa3 15.Bd3 g6 weakening the kingside defences. 14.Bg5 (Diag 1) Re8? Missing a neat little combination picking up a pivotal pawn. In Pavasovic-Sulava (Nova Gorica, 1996) Black simply bided his time and after 14...Bd7 15.Rfd1 Rad8 16.Bxe7 Nxe7 17.Qxb7 Qxc4 the flurry of exchanges led to a quick draw. 15.Bxe7 Nxe7 16.Ng5 Ng6 17.Nxf7! Bd7 The knight is taboo, as 17...Kxf7?? 18.Bxe6+ wins the black queen. 18.Nd6 Re7 19.f4 Bc6 20.Qe3 Kh8 Sadly for Black, his position is bereft of counterplay and he has to avoid an immediate 21.f5 breakthrough... 21.Rf2 Rf8 22.Raf1 Qa5 23.g3 a6 24.h4!... but his rook cannot help for long, as White threatens to win a piece with his next move and a flight square must be found. 24...Rd8 25.h5 Nf8 26.f5 Full steam ahead for an f-pawn about to cause havoc! 26...Bd5 27.Qg5! Red7 28.f6 (Diag 2) and it was at this point, with 28...Kg8 29.f7+ Kh8 30.h6 Ng6 31.f8Q+ Nxf8 32.Rxf8+ Rxf8 33.Rxf8 mate being the most emphatic finish, that Black resigned.

● Any enquiries regarding the Chess column should be addressed to Alan Dommett by emailing a.j.dommett@btinternet.com