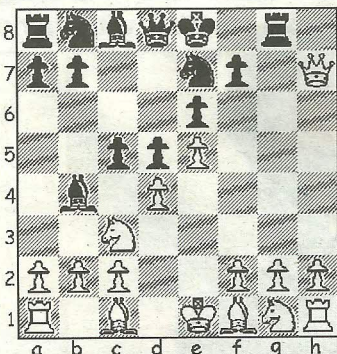


CHESS

by Alan Dommert

DIAGRAM 1



Southbourne A appear to be heading for yet another Bournemouth League Division 1 title following a 2.5-1.5 victory over Wimborne B in their penultimate match of the season. Two unfinished games against Ringwood A, due for completion next week, are now critical for Southbourne if they want to go on a final away trip to Wimborne A as champions. However, unfavourable results together with a defeat at Wimborne, would still leave the door open for Ringwood to achieve a first title success.

There was some consolation for Wimborne B when Southbourne A captain Martin Simons admitted that his team had 'a lucky escape' with early draws accepted with the white pieces at a time when both he and Graham White were worse against Chris Bellers and Michael Litchfield respectively. Bottom board also saw Len Laker benefit from Mike Lewis misplaying an endgame, whilst on top Walter Braun survived a missed mate in one by Graham Willetts. Time troubles then followed for the Wimborne player and a piece advantage was somehow frittered away before an eventual draw was agreed.

The following game is taken from the Amber Blindfold and Rapid tournament where both disciplines are put to the test by the world's best players. Magnus Carlsen is a leading exponent in either field, but Vassily Ivanchuk proves he can be a more than match at Rapid in this fine example of attacking play.

Carlsen, M - Ivanchuk, V

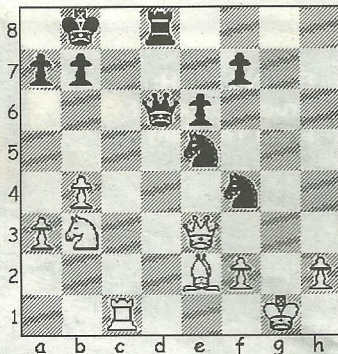
20th Amber Rapid Monaco, 2011

French Defence (C17)

1.e4 e6 2.d4 d5 3.Nc3 Bb4 4.e5 c5

5.Qg4 A sideline variation of the

DIAGRAM 2



Winawer targeting the kingside, as opposed to the more cautious 5.a3 and 5.Bd2 that treat the pin on the knight as a priority. **5...Ne7 6.Qxg7 Rg8 7.Qxh7 (Diag 1) Qa5** In Sylvan-Antonsen (Farum, 1993) Black saw no reason to ignore the d-pawn and after 7...cxd4 8.a3 Qa5 9.Rb1 dxc3 10.axb4?? (10.Be3) Qa2! the game was over. **8.Bd2 cxd4 9.Nb1 Nbc6 10.Nf3 Bd7 11.a3 0-0-0** White may have gained a pawn from the opening, but his opponent's attacking opportunities on both flanks are cause for concern... **12.c3 dxc3 13.Nxc3 d4!**...to say nothing of his prospects should the white king remain in the centre! **14.Nb5 Bxd2+ 15.Nxd2 Nf5 16.Rc1 Kb8** Freeing the queen's knight to pick up the e-pawn (17.f4? Nxe5 18.fxe5 Bxb5) and so White embarks on a risky plan to maintain his material advantage. **17.b4 Qa6 18.Qh3 Nxe5 19.Nxd4 Qd6 20.N4b3 Bc6** The dust settles and White still has problems completing development and manoeuvring his king to safety. **21.Rg1 Bd5 22.Qc3 Bxb3 23.Nxb3 Nh4 24.Be2** Black threatened 24...Nef3+, leaving White no alternative but to let his g-pawn go after all its previous protection. **24...Nxc3+ 25.Kf1 Nf4 26.Qe3?** A blunder brought about by mounting pressure when 26.Rxc3 Rxc3 27.Nd4 offered a chance of recovery. **26...Rxc3+ 27.Kxc3 (Diag 2) Qd5!** A crushing move that leads White to overlook a mate in one as he realises 28.Qxf4 Rg8+! 29.Qg3 (29.Kf1 Qh1 mate) Rxc3+, followed by 30...Qxb3, leaves a hopeless position. **28.Bg4? Qg2 mate**

● Any enquiries regarding the Chess column should be addressed to Alan Dommert by emailing a.j.dommert@btinternet.com