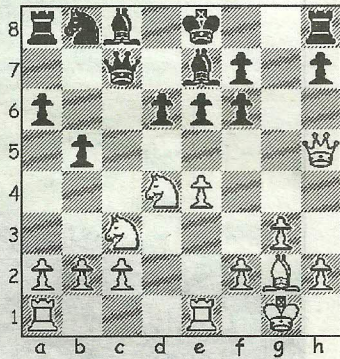


26/2/11

CHESS

by Alan Dommett

DIAGRAM 1



Wessex 1 have slipped into a pack of three teams vying for the third and fourth places that will guarantee qualification from their 4NCL Division 2 group into the final championship pool.

The latest couple of rounds ended in heavy defeats for Wessex against Poisoned Pawns 1 and Bristol 1 respectively and in each case the 2-6 scoreline reflected the team's poor form over the weekend.

Wimborne have announced that Coffee House Chess is to be played at the Olive Branch, East Borough (every Thursday from 10am to 1pm) and it is hoped that this casual form of the game will attract the interest of both club players and prospective new members.

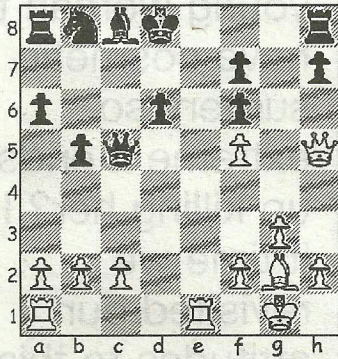
The following game is taken from the top division of the 4NCL and a Varsity match that ended in resounding victory for Cambridge despite this contest going the way of the much lower rated Oxford man.

Rose, M - Dearing, E
4NCL Daventry, 2010

Sicilian: Kan Variation (B43)

1.e4 c5 2.Nc3 a6 This cagey move is the hallmark of a variation that invariably leads to the development of the bishops on both sides along the a8/h1 diagonal. 3.Nge2 e6 4.g3 b5 5.Bg2 Bb7 6.0-0 Nf6 7.d4 cxd4 Black obtains more options by asking a

DIAGRAM 2



question of the knight and in Gdanski-Jaracz (Gdansk, 1994), after 7...b4 8.Na4 Bxe4 9.dxc5 Bxg2 10.Kxg2 Qc7 11.Kg1 (Be3?? Qc6+ wins a piece) Bxc5, a pawn was gained and a comfortable draw secured in 41 moves.

8.Nxd4 d6 9.Re1 Qc7 10.Bg5 Be7 11.Bxf6 gxf6 White seizes the initiative after 11...Bxf6 12.Ndx5! axb5 13.Nxb5 Qb6 14.Nxd6+ when three pawns are good compensation for his knight due to the vulnerability of the black king. 12.Qh5 Bc8? (Diag 1) 13.Nf5! White had threatened 13.Nxe6, but Black's retreating bishop response only adds to the potency of this sacrifice...13...exf5

14.Nd5!...because of the stunning knight fork that follows. 14...Qc5 15.Nxe7 Kxe7

16.exf5+ Kd8 (Diag 2) 17.Qxf7! One rook could have been removed immediately, but White finds a prettier finish by using the threat of mate to pick up the other instead! 17...Ra7 18.Qxf6+ Kc7 19.Qxh8 Bxf5 The dust settles and White is the exchange and two pawns ahead, a margin that soon leads to Black's resignation. 20.Rad1 Nd7 21.Re3 b4 22.c3 1-0

● Any enquiries regarding the Chess column should be addressed to Alan Dommett by emailing a.j.dommett@btinternet.com