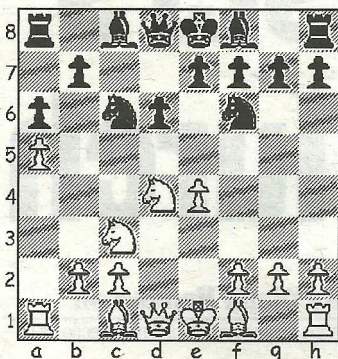


23 JUNE 2011

CHESS

DIAGRAM 1



The 24th Leon Masters, an event that took the form of a rapid match between Viswanathan Anand and Alexei Shirov, has ended in a resounding 4.5-1.5 victory for the reigning World Champion. Two games a day were played with a time control of 60 minutes plus 30 seconds per move and this proved to be a format that Anand was more comfortable with as he stormed to victory and remained unbeaten throughout.

The following game is taken from this season's Wimborne KO competition and is a good example of how preparation can provide a player with a vital edge, should he get the opportunity to make early use of it.

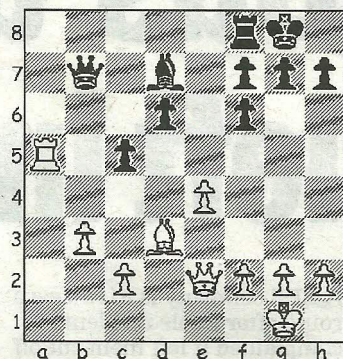
Taylor-Bowd, P - Clark, I

Wimborne KO Semi-final, 2011
Sicilian Najdorf (B90)

1.e4 c5 2.Nf3 d6 3.d4 cxd4

4.Nxd4 Nf6 5.Nc3 a6 6.a4 Nc6 7.a5!? (Diag 1) A new idea in this position first played by Gata Kamsky only four days before this very game! Undecided on development of his king's bishop (either c4 or e2) White simple gambits his a-pawn for no immediate apparent reason and Black bravely takes on the challenge. **7...Nxa5 8.Nd5!** A follow-up with bags of shock value, as **8...Nxe4?** is met by **9.Bb5+!!** axb5 10.Nxb5, when the two knights working in tandem will cause havoc. **8...Nc6 9.Nxc6 bxc6 10.Nxf6+ exf6 11.Bd3** Although White's preparation ended here he has so much scope for regaining the a-pawn over the next few

DIAGRAM 2



moves there are no real worries regarding a levelling of material. **11...Qb6 12.O-O Be6 13.Qe2 a5 14.b3 Be7 15.Be3 Qb7 16.Bd2 Bd8 17.Ra4 Bd7 18.Rfa1 c5 19.R4a3...**and so it proves, as Black has nothing better than the completion of development followed by reassessment of the situation after the a-pawn drops.

19...O-O 20.Bxa5 Bxa5 21.Rxa5 Rxa5 22.Rxa5 (Diag 2) **Re8?!**

Better is **22...Bc6** because the natural **23.f3??** loses instantly to **23...c4! 24.Bxc4 Qb6+**, picking up the rook. **23.Qd2 Bc6 24.f3** With both rook and e-pawn protected, White soon manoeuvres his queen to the a-file to exchange into a favourable ending. **24...g6 25.Qc3 Kg7 26.Qa1 Ra8?!** A move accompanied by a draw offer, made more in hope than expectation, as the following passage of play sees White carry out his plan to the full.

27.Rxa8 Qxa8 28.Qxa8 Bxa8 29.c3 Kf8 30.Kf2 Ke7 31.Ke3 Bc6 32.b4 Kd8 The bishop is to be used to defend the kingside pawns while Black's king guards the opposite wing, but White soon has pieces on all the optimal squares. **33.Bc4 Be8 34.f4 Kc7 35.h4 cxb4?!** **36.cxb4** and, with his king threatening to advance in support of the passed pawn, White went on to win in 48 moves.

● Any enquiries regarding the Chess column should be addressed to Alan Dommert by emailing a.j.dommett@btinternet.com