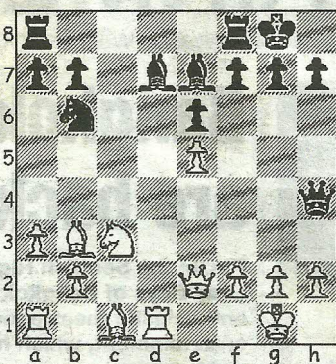


CHESS

by Alan Dommett

DIAGRAM 1



Life in Division 3 South of the 4NCL has begun promisingly for Wessex with two victories on the first weekend of fixtures at the Barcelo Hotel, Daventry. Local league players Bruce Jenks, Martin Simons and Michael Yeo played on the top three boards in both matches and an opening day 4-2 win against Hackney was soon followed by a 5.5-0.5 mauling of Metropolitan.

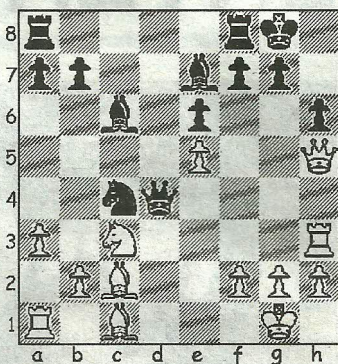
Division 3 South and Division 3 North are being played as a Swiss tournament in which pairings for both rounds of a two-day weekend are determined in advance and at the two final weekends (rounds 7-11) the divisions will combine with match and game points carried over from the first three weekends.

The following game, taken from the recent Dorset Rapidplay, features a well-constructed attack and was the winner of the Best Game prize for the event.

Pollyn, S - Pleasants, A
Dorset Rapidplay, 2011
Sicilian: 2.c3 (B22)

1.e4 c5 2.d4 cxd4 3.c3 Nf6 4.e5 Nd5 5.cxd4 e6 6.a3 d6 7.Nf3 Nc6 8.Bc4 The main line alternative is 8.Bd3, making full use of the b1/h7 diagonal. 8...Be7 In Georgiev-Popov (Plovdiv, 1981) Black target-

DIAGRAM 2



ed the bishop immediately and after 8...Nb6 9.Bb5 dxe5 10.dxe5 Qxd1+ 11.Kxd1 a rather grandmasterly draw ensued. Here in the rapidplay arena such timidity is, of course, frowned upon! 9.0-0 dxe5 10.dxe5 0-0 11.Qe2 Nb6 12.Bb3!? Tempting Black into the following exchange of minor pieces...12...Nd4 13.Nxd4 Qxd4 14.Rd1 Qh4 ...and a queen in isolation. The more natural 14...Qc5 is turned down due to White being able to feed off it with Be3/Nc3 and Rac1, leaving a Morra Gambit-type position without suffering the loss of a pawn. 15.Nc3 Bd7 (Diag 1) 16.Rd3! Suddenly the black queen is vulnerable and with his next move White also increases the pressure on his opponent's king. 16...Bc6 17.Bc2 h6 18.Rh3 Qd4 The only safe square, but with his own queen vacating the kingside Black is powerless to prevent another taking her place to dramatic effect. 19.Qh5 Nc4? (Diag 2) The move Black is relying on to quell the imminent sacrificial attack... 20.Bxh6! Qxe5 21.Bg5! ...but White sees one move further and, because 21...f5 must now be played to avoid a back rank mate and his bishop is therefore lost, Black resigned.

● Any enquiries regarding the Chess column should be addressed to Alan Dommett by emailing a.j.dommett@btinternet.com