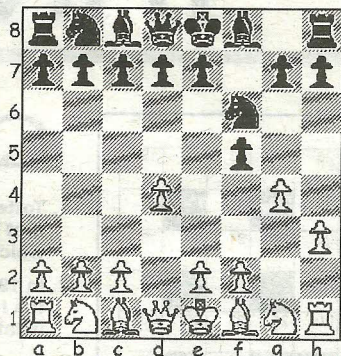


## CHESS

by Alan Dommett

DIAGRAM 1



B&DCL and Dorset League members are advised of a 20-board simultaneous chess exhibition being staged in Bournemouth town square on the 10th July (from 11am-4pm) by WIM Meri Grigoryan to help raise money for Cancer Research UK and Women's Chess. Full details of the event can be obtained from the ECF website and it is hoped that there will be many local club players attending and competing in support of this worthy cause.

The following game, taken from last year's Hastings event, features one of the UK's leading GMs unsettling his opponent by unveiling an opening surprise as early as the second move.

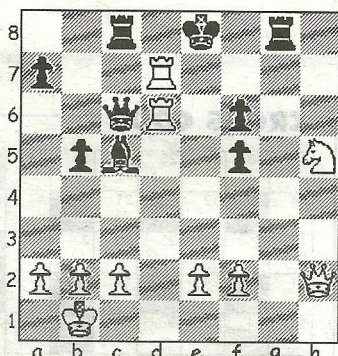
**Williams, S - Goodger, M**

85th Masters Hastings, 2010

Dutch Defence (A80)

**1.d4 f5 2.h3** A seemingly irrelevant pawn push that turns out to be the springboard for a dangerous gambit line first played by Viktor Kortschnoj in the Seventies. **2...Nf6 3.g4 (Diag 1) d5** Black already has his suspicions, having realised that after **3...fxg4 4.hxg4 Nxg4 5.Qd3 Nf6?** **6.Rxh7!** he would have faced an unenviable choice between losing a rook or suffering a smothered mate. **4.Nf3 fxg4 5.hxg4 Bxg4 6.Ne5 Bf5 7.Bh3 e6** In Hansson-Ingbrandt (Gothenburg, 1996) Black engineered a series of exchanges, but after **7...Qc8 8.Qd3 Ne4 9.Nc3 Nc6 10.Nxd5 Nxe5 11.dxe5 Bxh3 12.Rxh3** material was level, his

DIAGRAM 2



knight was out on a limb and White went on to win in 23 moves. **8.Bxf5 exf5 9.Qd3!** The key move seen in all lines and in the next passage of play White simply completes his development... **9...Nc6 10.Bg5 Qd6 11.Nc3 Nxe5 12.dxe5 Qxe5 13.Bxf6 gxf6 14.Qb5+!** ...safe in the knowledge that his superior position will provide a whole host of attacking options. **14...Kf7 15.0-0-0!** Still the pawns are not gathered in, with White preferring piece activity instead! **15...d4 16.Qc4+ Qe6 17.Qxc7+ Be7 18.Rxd4** Material now levelled, White proceeds to hunt down his opponent's king. **18...Qc6 19.Qh2 h5 20.Rhd1 Rac8 21.Kb1 b5** Black's first sign of aggressive intent, but White can easily protect against **22...b4** prior to bringing his knight into the attack. **22.R1d2 Kg6 23.Nd5 Bc5 24.Nf4+!** An intermezzo check that clears the d-file for the doubled rooks... **24...Kf7 25.Rd7+ Ke8 26.Nxh5 Rg8 27.R2d6!** (Diag 2) ...leading to this stunning sacrifice and to Black's immediate resignation! If **27...Bxf6 28.Nxf6+** followed by **29.Qh6+** ends in mate, whereas after **27...Qxd6 28.Qxd6! Bxd6 29.Nf6+ Kf8 30.Nxg8 Kxg8 31.Rxd6** White has a totally won rook and pawn ending.

● Any enquiries regarding the Chess column should be addressed to Alan Dommett by emailing [a.j.dommett@btinternet.com](mailto:a.j.dommett@btinternet.com)