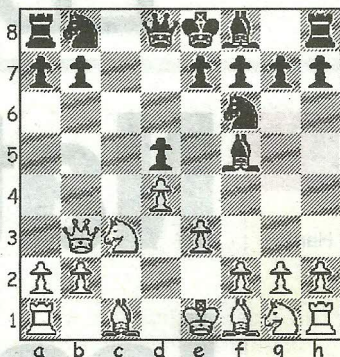


CHESS

by Alan Dommett

15 OCT 11

DIAGRAM 1



LOCAL league players are reminded that entries are still being taken for the 17th Dorset Rapidplay Championships which take place at Tuckton Social Club on Sunday 30th October (9.45am start). This popular all-day event is held over six rounds (30 minutes each for the complete game) and full details can be obtained from Martin Simons (tel:-01202 513504)

Matthew Sadler, one of Britain's leading GMs of recent years, is back playing chess again and in his second event in two months he has won the Oslo Open, securing the title with an 8/9 score and a round to spare. The following game, a fine win in the fifth round, shows that he has lost none of his attacking flair.

Sadler, M - Ernst, S

Oslo GM Open, 2011

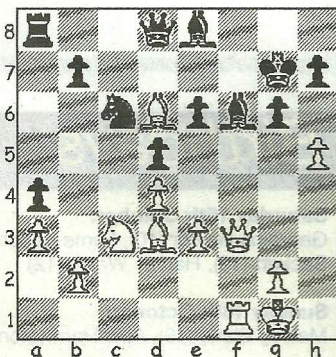
Slav Defence (D10)

1.d4 d5 2.c4 c6 3.Nc3 Nf6 4.e3

Bf5 More combative than the main line 4...e6, as the bishop is placed on the business side of the pawn chain. 5.cxd5 cxd5 6.Qb3 (Diag 1)

Bc8 An odd early retreat after such precise development, although other moves are not as good. For instance, in Taskovits-Toth (Szekszard, 1993) Black tried 6...Qd7, but, after the forcing line 7.Bb5 Nc6 8.Nf3 e6 9.Ne5 Qc7

DIAGRAM 2



10.Qa4 Rc8 11.Qxa7 White was a safe pawn ahead and went on to win in 20 moves. 7.Nf3 Nc6 8.Ne5 e6 9.f4 The knight has a position of strength that cannot be substantiated, but supporting it in this way ensures the piece, or a pawn after recapture, will stick in Black's throat. 9...Be7 10.Bd3 0-0 11.0-0 Nd7 12.Bd2 Ndx e5 If the knight is kicked with 12...f6, then 13.Nxd7 Bxd7 14.f5! seizes the initiative. 13.fxe5 Bd7 14.Rf3 Nb4 15.Be2 a5 16.a3 a4 17.Qd1 Nc6 A tacit acceptance of a passive role, whereas White's minor pieces look set to combine for a kingside attack... 18.Bd3 g6 19.Qe2 f6 ...unless Black takes drastic measures to break his opponent's grip on the centre. 20.exf6 Rxf6 21.Raf1 Kg7 22.Be1 Rxf3 23.Qxf3 Bf6 Whilst it may appear that Black is over the worst, he can do little to create threats of his own and the next passage of play gives an indication of his eagerness to merely repeat moves, given the chance to do so. 24.Bg3 Na5 25.Bc7 Qe7 26.Bd6 Qd8 27.Bc7 Qe7 28.Bd6 Qd8 29.h4! White avoids the draw by repetition and finds a quick way to turn his positional advantage into a win. 29...Nc6 30.h5 Be8 (Diag 2) 31.h6+! and it was here that Black resigned, realising that 31...Kf7 32.Nxd5! exd5 33.Qxd5 is an elegant mate.

● Enquiries regarding the Chess column should be addressed to Alan Dommett by emailing a.j.dommett@btinternet.com