

15/11/11

DIAGRAM 1

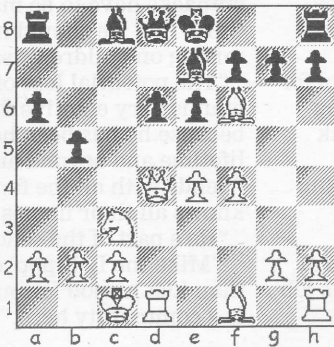
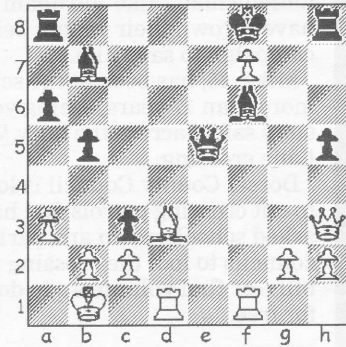


DIAGRAM 2



Local league players are reminded that the 18th Dorset Closed Congress is being held at the Bournemouth International Hotel, Priory Road, West Cliff from Friday, January 28 to Sunday, January 30 and will feature the Dorset Individual Championships in the main section, together with both Major (Under-160) and Minor (Under-135) events. Full details of the 5-Round schedule and conditions of entry can be obtained from Ian Clark (tel no:- 01202 536370)

Top seed Romain Edouard's challenge at the Hastings Congress ended in last round defeat at the hands of one of the many strong Indian players in the tournament. This game is given below and it proved enough for the winner to take a share of first place alongside fellow countryman IM Arghyadir Das, both players compiling impressive 7/9 scores.

Sengupta, D - Edouard, R
Hastings Masters, 2011
Sicilian: Richter-Rauzer (B66)

1.e4 c5 2.Nf3 d6 3.d4 cxd4 4.Nxd4 Nf6 5.Nc3 Nc6 6.Bg5 e6 7.Qd2 a6 8.0-0-0 Nxd4 An initial break from main line theory, continuing 8...h6 9.Be3 Be7 10.f4, when the battle lines are set for attacking play on opposite wings. 9.Qxd4 Be7 10.f4 The best developing square for the king's bishop is still far from clear, so White keeps his powder dry, whereas Black's strategy is more defined and he gets on with his queenside expansion. 10...b5 11.Bxf6 (Diag 1) gxf6. In Karasev-Aseev (St Petersburg,

1995) Black opted for early tactics and after 11...Bxf6?! 12.e5 dxe5 13.Qe4 Bd7 14.Bxb5!? axb5 15.Rxd7! Qa5 16.Rb7 0-0 17.Rxb5 a wild game ended in a win for White in 38 moves. 12.e5 d5 13.Be2 Bb7 14.f5!

Taking the opportunity to open the centre with the enemy king still in the firing line. 14...fxe5 15.Qxe5 Bf6 16.Qg3 Qb8 17.Qh3 Queens are kept on the board and further pressure exerted on the e-pawn. 17...d4 18.fxe6!? A piece sacrifice that just looks right in the circumstances and now it is a question of which king is in the most danger! 18...Qf4+ 19.Kb1 dxc3 20.exf7+ Kf8 21.a3 Capturing the c-pawn invites trouble on both the long diagonal and the c-file, but the threat of 21...Qb4 must also be met. 21...h5 22.Rhf1 Qe5 23.Bd3 (Diag 2) Qg5? Black realises that 23...cxb2 gets him nowhere, as his own pawn will act as a buffer against any possibilities on the long diagonal.

However, this re-focus on the g-pawn ignores his own vulnerability and White immediately conjures up a ferocious attack. 24.Qd7! Bxg2 25.Rde1 Be7 Necessary to prevent 26.Re8+ and a back rank mate. 26.Rf5 Qh4 27.Rfe5 Rd8 28.Qc7 Rxd3 No more than a token exchange sacrifice and after 29.cxd3 Black resigned, powerless to prevent 30.Rxe7 and the ultimate in breakthroughs.

● Any enquiries regarding the Chess column should be addressed to Alan Dommett by emailing a.j.dommett@btinternet.com