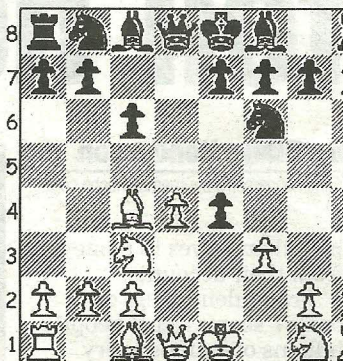


## CHESS

by Alan Dommert

DIAGRAM 1



After a dramatic tie-break playoff between the two leading GMs in the country Michael Adams duly won the second rapid game against Nigel Short and thereby successfully defended his British title. Adams and Short had finished the 11-round event with  $8\frac{1}{2}/11$  scores and are therefore joint winners of the English Chess Championship and will jointly hold the Tony Miles Trophy.

Local league representation was ultimately headed by Southbourne's Bruce Jenks and Martin Simons who came through the two weeks of gruelling competition to compile notable 5/11 scores. The following game is testimony to the staying power required at this level and in an effort to overcome his glut of draws throughout the event Martin Simons turns to the BDG to liven up last round proceedings.

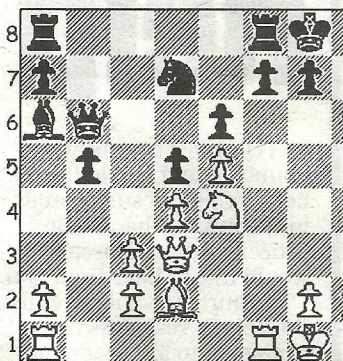
**Simons, M - Magee, R**

British Championship Sheffield, 2011

**Blackmar-Diemer Gambit (D00)**

**1.d4 d5 2.e4 dxe4 3.Nc3 Nf6 4.f3 c6** The O'Kelly Defence, described by IM Christoph Scheerer in his recent book on the BDG, published by Everyman, as 'an elegant way to reach the Ziegler while avoiding 6.Bd3', which is the author's key move to breathe life into the variation for White. **5.Bc4 (Diag 1) e6** An early sign that Black is in unfamiliar territory, as he continues to decline the gambit, avoiding transposition to the Ziegler (5...exf3) and

DIAGRAM 2



also a natural 5...Bf5 developing move, probably uncertain as to the outcome after the 6.g4 bayonet attack. Indeed, 5...e5?! seems far from straightforward too and even world champions have been known to overreact when faced with this line, as in Dahlen-Botvinnik (Stockholm, 1962) when 5...e5?! 6.dxe5 Qxd1+ 7.Kxd1 exf3 8.Nxf3 Ng4 Ke2 left White in a good position and Black content to agree a draw in 23 moves. **6.fxe4 Bb4 7.e5 Nd5 8.Qd3 Qa5** Black concentrates all his efforts on a pin that will hardly lead to a fall, let alone full submission, because it cedes all the space on the kingside to his opponent. **9.Bd2 Nd7 10.Nf3 Bxc3 11.bxc3 b5 12.Bb3 Ba6 13.Ng5!** A fine move that prevents any immediate short or long castling whilst at the same time providing the knight with quick access to the prime e4 outpost. **13...h6 14.Ne4 0-0 15.0-0 Qb6** More than mere consolidation, as 16...Nxe5 is threatened. However, White sees further... **16.Bxd5 cxd5 (Diag 2) 17.Nf6+!** ...and uncorks this stunning knight sacrifice to bring the game to a swift conclusion! **17...gxf6 18.exf6 Qd6** Realising that an unopposed 19.Qg3+ ends in mate, but White's inevitable response simply paves the way to victory. **19.Bf4 Resigns.**

● Any enquiries regarding the Chess column should be addressed to Alan Dommert by emailing [a.j.dommett@btinternet.com](mailto:a.j.dommett@btinternet.com)