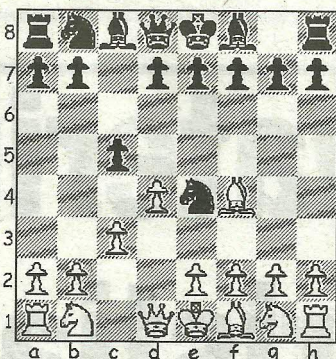


DIAGRAM 1



The latest round of matches in the Bournemouth League 1st Division could well turn out to be a major turning point in Southbourne's season as their B team recorded a fine 2.5-1.5 win over Ringwood A whilst the A team look set to land a decisive blow in defence of their title against a full strength Wimborne A side.

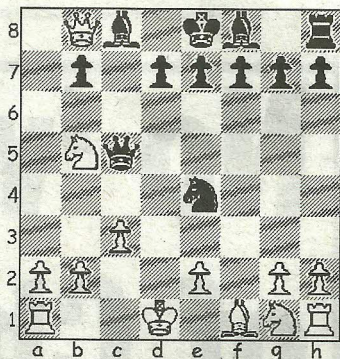
The sharing of points for Graham White and Russell Pegg against Phil Taylor-Bowd and Miles Cowling respectively kept this result in doubt in the early stages, but Martin Simons decisive win, on top board against Ian Clark, then gave Southbourne an unassailable lead and Len Laker's two-pawn advantage over Mike Waddington at adjournment bodes well for an ultimate victory.

The following miniature is taken from the Dorset Congress and features an uneventful opening that gives little indication of the fireworks to follow.

**Grigoryan, M - Helbig, P**  
Dorset Open Congress, 2011  
Trompowsky Attack (A45)  
1.d4 Nf6 2.Bg5 Ne4 3.Bf4 c5

4.c3 (Diagram 1) cxd4?! Responding in like-minded fashion to White's passive opening play, whereas in Terentiev-Gallagher (Liechtenstein, 1990) the more combative 4...Qb6 led to 5.Qb3 cxd4 6.Qxb6 axb6

DIAGRAM 2



7.Bxb8 dxc3 8.Be5 Rxa2 9.Nxc3 (9.Rxa2 c2+) 9...Rxa1+ 10.Nd1 Nxf2 and Black cruised to a win in 22 moves. 5.Qxd4 Nf6? Losing a pawn when 5...Qb6 salvages the situation at the expense of doubling them on the b-file. Here the assumption must be that only the brave or foolhardy would experiment with 6.Qxe4?! Qxb2 7.e3 Qxa1 8.Qc2!? and an attempted long-term trapping of the black queen. 6.Bxb8 Rxb8 7.Qxa7 Qc7 8.Na3! White finds the perfect move to exploit her opponent's fragile defence of the queen's rook... 8...Ne4 9.Nb5 Qc5 ...so Black, realising he will have to relinquish his grip on the piece eventually, decides to hunt the king instead. 10.Qxb8 Qxf2+ 11.Kd1 Qc5 (Diagram 2) 12.b4! The need to defend against a possible back rank mate means the queen has no decent squares available (12...Qc4 13.Nf3 e6 14.e3 is crushing) and another enforced exchange hardly helps the cause. 12...Nxc3+ 13.Nxc3 Qxc3 14.Rc1 Sealing Black's fate and leaving him a choice between resignation without further ado or when the checks run out. He chooses the latter option and in so doing allows an elegant final move to the game. 14...Qd4+ 15.Ke1 Qxb4+ 16.Kf2 Qb6+ 17.e3 Qb2+ 18.Ne2 Resigns

Any enquiries regarding the Chess column should be addressed to Alan Dommett by emailing a.j.dommett@btinternet.com