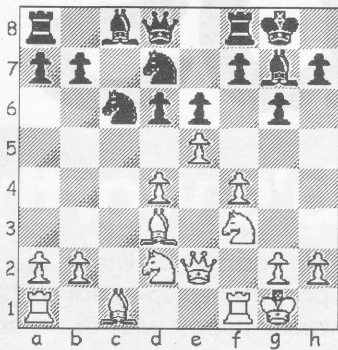


CHESS

DIAGRAM 1



THE Bournemouth Schools (Junior Section) qualifying rounds have been played over the last fortnight with four schools, Stourfield, St Marks, Bethany and Moordown St Johns, competing for places in a final to be held at the beginning of April at the Marriott Highcliffe Hotel.

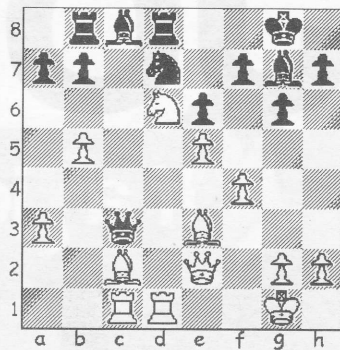
The Senior Schools event will take place on the same day and once again Bournemouth Boys and Portchester will contest the final, after which the Sir George Meyrick trophies will be presented by the Mayor of Bournemouth.

The following game, taken from the recent Dorset Closed Congress is the eventual champion's penultimate round victory that proved crucial to his bid for the title.

Lewis, M - Goater, K
Dorset Closed, 2011
Modern Defence (B06)

1.e4 g6 2.d4 Bg7 3.c3 Theory on this passive line is littered with 19th century games in which White, wary of a newfangled defence that did not contest the centre, favoured a quiet defence of the d-pawn.
3...d6 4.Bd3 Nd7 5.f4 Played to deter an immediate 5...e5, whereas in Showalter-Albin (Buffalo, 1894) White invited the move before pushing the f-pawn and after 5.Ne2 e5 6.f4 Qh4+ 7.g3 Qh3 8.Ng1 Qe6 9.Nf3 h6 10.0-0 exf4 11.Bxf4 a strong initiative soon turned into a quick win. **5...c5 6.Nf3 e6 7.Nbd2**

DIAGRAM 2



Ne7 8.Qe2 0-0 9.0-0 cxd4 With no real alternative to breaking the central tension, Blacks accepts a weak d-pawn to go on the offensive...

10.cxd4 Nc6 11.e5 (Diag 1) Qb6? ... only to overplay the aggressive intent and run into trouble. **12.Nc4! Nxd4 13.Nxd4 Qxd4+ 14.Be3**

Suddenly the black queen is vulnerable while the white knight is destined to become a massive piece.

14...Qd5 15.Nxd6 Rd8 16.Be4 Qa5 Forced and from now on, even in a vast expanse on the queenside, escape squares are at a premium.

17.a3 Rb8 18.b4 Qa4 19.Bc2 Qc6 20.Rac1! Sometimes the threat is worth more than its execution and White can choose his moment to unleash a discovered attack on the hounded queen. **20...Qd5 21.Rfd1 Qc6 22.b5 Qc3 (Diag 2) 23.Bxg6!**

That moment is now and with his queen isolated and the minor pieces powerless to retaliate it is just a matter of time before Black concedes defeat. **23...Qxa3 24.Bxf7+ Kf8 25.Rd3 Qb4 26.Bxe6 Ke7 27.Bb3 Rf8 28.Qg4 Bxe5** Taking advantage of the pawn being pinned, but White can simply ignore it... **29.Qe6+ Kd8 30.fxe5** ...and it was here that the dual threats of 31.Bg5+ and 31.Nxc8 led to Black's resignation.

● Any enquiries regarding the Chess column should be addressed to Alan Dommatt by emailing a.j.dommett@btinter-