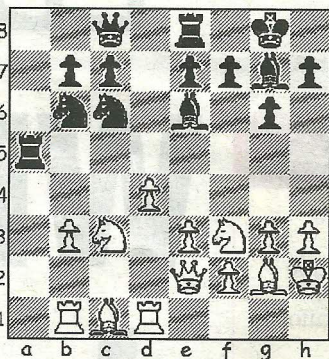


## CHESS

by Alan Dommett

DIAGRAM 1



THE British Championships take place in the Steel City (Ponds Forge, Sheffield) this year and run for a fortnight, starting on Monday, July 25.

Britain's top players will be turning out for what promises to be the strongest domestic event for a decade with entrants including former world title challengers Michael Adams and Nigel Short and past winners David Howell and Stuart Conquest.

Local league and county players will be saddened by news of the death of Alf Bullock last week. A stalwart for both the Poole and Bournemouth clubs, Alf will be remembered for his determined skills at the board and organisational work at county level that spanned several decades.

The following game, taken from the recent FIDE Candidates event, is the critical win for Boris Gelfand that secured his qualification for a World Championship match with reigning champion Viswanathan Anand.

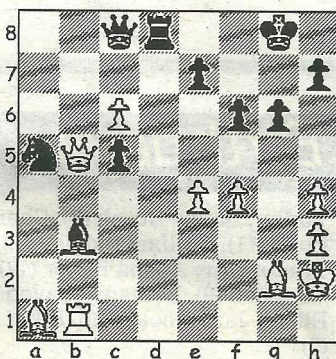
**Gelfand, B - Grischuk, A**

WCh Candidates Kazan, 2011

Fianchetto Gruenfeld (E60)

1.d4 Nf6 2.c4 g6 3.Nf3 Bg7 4.g3 d5 5.cxd5 Nxd5 6.Bg2 Nb6 The main line alternative sees both sides castling before this unopposed knight retreat completes the transposition. 7.Nc3 Nc6 8.e3 0-0 9.0-0 Re8 In Leko-Loginov (Budapest, 1993) an immediate 9...e5 prompted 10.d5 Na5 11.e4

DIAGRAM 2



c6, whereupon, just as the position was looked interesting, a draw was agreed. 10.Re1 a5 11.Qe2 Bg4 12.h3 Be6 13.b3 a4 14.Rb1 axb3 15.axb3 Qc8 16.Kh2 Ra5 17.Rd1 (Diag 1) Rh5!? A sudden desertion of the open file and switch to the kingside that looks promising for Black, but his opponent reacts with calm precision. 18.Nh4 Bf6 19.f4 Rd8 20.Qf2 Bxh4 The alternative was 20...Nb4, in an effort to control d5, although 21.e4 would probably have been the natural and aggressive response. 21.gxh4 Nd5 22.Nxd5 Rhxd5 23.Bb2! Declining the invite to win the exchange, as 23.Bxd5 Bxd5 cedes Black complete control of the white squares. 23...Rb5 24.Qe2 Rh5 25.e4! Sacrificing the b-pawn and now the aggression mentioned in the previous note is clear for all to see! 25...Bxb3 26.Rdc1 Na5 After 26...Nxd4 27.Bxd4 Rxd4 28.Rxb3 Black loses a piece. 27.d5 b6 28.Be5 c5 The pawn has to be returned and with Black's minor pieces looking all at sea White steadily increases the pressure on the isolated knight and bishop. 29.dxc6 f6 30.Ba1 Rc5 31.Rxc5 bxc5 32.Qb5 (Diag 2) Qc7? Eyeing the f-pawn, Black overlooks 33.Rxb3 Nxb3 34.Qxb3, leaving the king in check and, forced to compromise, his position worsens ...33.Rxb3 Nxc6 ...as 33.Qxf4+ Rg3 allows White to save his rook. 34.e5 Nd4 35.Qc4+ and with this check (followed by 36.Rb7) neatly side-stepping the knight fork, Black resigned.

● Any enquiries regarding the Chess column should be addressed to Alan Dommett by emailing [a.j.dommett@btinternet.com](mailto:a.j.dommett@btinternet.com)