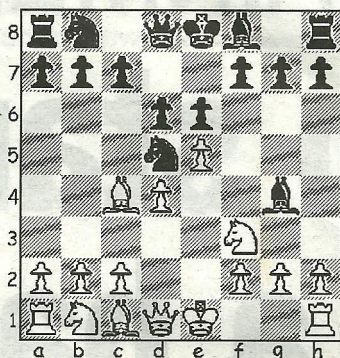


## CHESS

by Alan Dommett

10 DEC 2011

DIAGRAM 1



The Southbourne Christmas Tournament is to be held at Tuckton Social Club on Friday, December 23 from 7.15pm to 10.30pm and the 6/7 round Swiss event is open to all local chess players with the format being a handicap event to favour players of lesser grades by means of a time limit of 20 minutes allocated to each game, the grading difference determining who gets the most time.

The contract for the FIDE World Championship between the reigning world champion Viswanathan Anand and challenger Boris Gelfand has been signed in Moscow and the 12-game match will be held next year at the Tretyakov State Gallery from the 10th to 31st May.

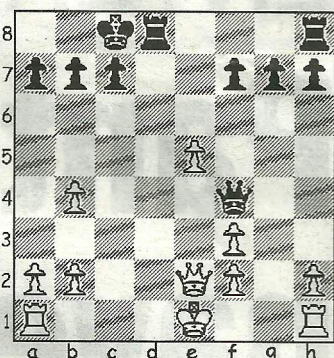
The following game is another taken from the opening rounds of this season's 4NCL (Northern League Section) and features a quiet, yet remarkably clinical, finish to the game.

**Murphy, J - Carleton, J**  
4NCL, Crewe, 2011

Alekhine's Defence (B05)

**1.e4 Nf6 2.e5 Nd5 3.d4 d6 4.Nf3 Bg4 5.Bc4** The considerably more circumspect 5.Be2 is the main line alternative, with 5...e6 6.0-0 Be7 7.c4 Nb6 8.Nc3 0-0 providing a sound footing for this defence for well over half a century. **5...e6 (Diag 1) 6.Qd3?!** An unusual and

DIAGRAM 2



rather ill-founded early development of the queen that, on the evidence of this miniature, has little recommending it. In Kun-Benedek (Hungary, 1998) White tried to remove the pin, but after 6.h3 Bh5 7.0-0 Nb6 there was nothing better than 8.Be2, whereupon 8...d5 left Black with a comfortable game which he won in 25 moves. **6...Nc6 7.Bxd5 exd5 8.Bf4** White is already struggling to protect his central pawns. **8...Bxf3 9.gxf3 dxe5 10.dxe5 Qd7 11.Nc3 Nb4! 12.Qe2?** Underestimating the power of Black's reply, although 12.Qd2 offers scant respite, as 12...d4 13.0-0-0 (13.Ne4 d3!/+ ) 13...0-0-0 14.a3 dxc3 15.Qxd7+ Rxd7 16.Rxd7 Kxd7 17.axb4 Bxb4 leaves Black with an enviable endgame. **12...Qf5! 13.Nxd5** The counter-attacking 13.Qb5+ only flatters to deceive after 13...c6 14.Qxb7 Rd8 because White still has to contend with the dual hit on bishop and c-pawn. **13...0-0-0 14.Nxb4 Bxb4+ 15.c3** Guaranteeing the recovery of a piece and therefore, with one of the doubled pawns destined to fall, has White survived without loss of material? **...15...Qxf4 16.cxb4 (Diag 2) Rhe8!...** not once his opponent spots this crushing improvement on pawn-grabbing! The attack on the e-pawn also carries a threat to win the queen and, as 17.0-0 Rxe5 18.Qc2 Rg5+ leads to mate and 17.Kf1 Rxe5 18.Qc2 Rd2 19.Qb3 Qh4 ends in similar fashion, White resigned.

● Any enquiries regarding the Chess column should be addressed to Alan Dommett by emailing [a.j.dommett@btinternet.com](mailto:a.j.dommett@btinternet.com)