

CHESS

by Alan Dommett

10 SEP 2011

DIAGRAM 1

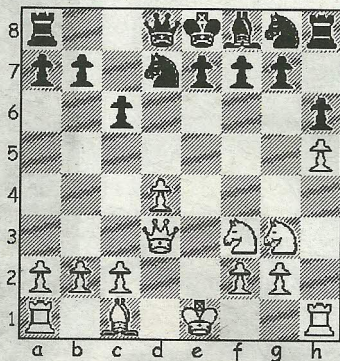
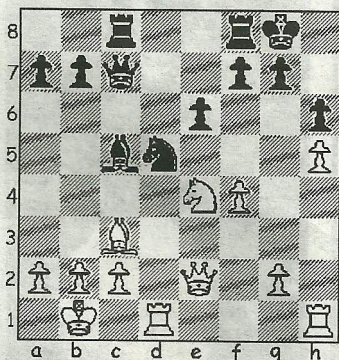


DIAGRAM 2



There are significant changes taking place at the helm of the Wimborne club following the recent AGM which saw both chairman Tony Buckfield and secretary Norman Mackie step down from their respective roles. Tony, a founder member of the club, had been chairman for well over 30 years and the meeting duly elected him an Honorary Life President in recognition of his unsurpassable contribution to the club.

Norman, who was secretary throughout several years of continued club development and increased membership, will now concentrate his efforts on organising the Bournemouth Congress, an event incorporating the 46th Dorset Congress, which is being held from Friday 14 -16th October (tel:- 01202 551888 for full details)

The following game is taken from the British Championships and opens in calm waters before providing a storming finish.

McKenna, J - Foo, W

British Championship Sheffield, 2011

Classical Caro-Kann (B19)

1.e4 c6 2.d4 d5 3.Nc3 dxe4

4.Nxe4 Bf5 5.Ng3 Bg6 6.h4

Luddite by nature, this h-pawn advance to win the bishop was first played by Mikhail Chigorin at the turn of the last century and has since become a popular way to blunt the key weapon in Black's defensive armoury. 6...h6

7.Nf3 Nd7 8.h5 Bh7 9.Bd3

Mission accomplished, White trades the most influential minor pieces and settles for an uneventful opening phase.

9...Bxd3 10.Qxd3 (Diag 1) Ngf6

Black can also prepare to castle long with 10...Qc7 and after 11.Bd2 e6 12.0-0-0 Ngf6, with White having nothing better than an insipid 14.Ne4, he probably has a slight edge. 11.Bd2 e6

12.0-0-0 Be7 13.Qe2 0-0

14.Ne5!? Qc7

Comparing this position with that given in the previous note, it is clear that White has instilled some life into his game by keeping the knight options open until his opponent castled short. 15.f4 c5 16.dxc5 Bxc5 17.Nxd7 Nxd7 18.Ne4 Rac8 19.Kb1 The possibility of a discovered mating attack along the c-file is nullified, but White also has his own plans for a similar threat ...19...Nb6 20.Bc3 Nd5? (Diag 2) ...and Black walks right into the trap. 21.Rxd5!! An exchange sacrifice of such potency that Black resigned without recapturing! In fact, he faces a mate in 7 after 21...exd5

22.Nf6+! gxf6 (22...Kh8 23.Qd3 g6 24.hxg6 is also fatal) 23.Qg4+ Kh7 24.Bxf6 Rg8 25.Qf5+ Rg6 26.hxg6+ fxg6 27.Rxh6+! Kg8 (27...Kxh6 28.Qh3 mate) 28.Qxg6+ Kf8 29.Rh8 mate.

● Any enquiries regarding this column should be addressed to Alan Dommett by emailing a.j.dommett@btinternet.com