

CHESS

by Alan Dommett

9 July 2011

DIAGRAM 1

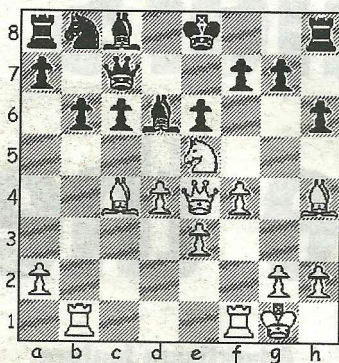
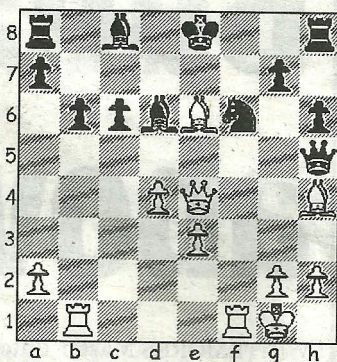


DIAGRAM 2



THE B&DCL Annual General Meeting took place last week and members attending were informed of two new events that will be held in Bournemouth during what promises to be a busy new season. Full details of both will be made available over the coming weeks once arrangements have been finalised.

Magnus Carlsen's recent performance in the Kings Tournament in Medias has taken him back to the top of the July FIDE rating list, and above World Champion Viswanathan Anand who did not play during the last rated period. Levon Aronian has dropped back after his tied match with Alexander Grischuk in the classical games section of the Candidates tournament, whilst Boris Gelfand has moved up to twelfth in the list and ahead of Grischuk after defeating him in the same event.

The following game, taken from the Norwegian Championships, was played at a time when Carlsen had just reached GM status and is a good example of his extremely inventive style of play.

Carlsen, M - Groenn, A
Nor-ch Sandnes, 2005
Semi-Slav (D43)

1.Nf3 d5 2.d4 Nf6 3.c4 c6
4.Nc3 e6 5.Bg5 h6 6.Bh4 Qb6
The main line alternative to this optimistic early queen move is 6...dxc4 followed by a concerted, if somewhat ungainly, effort to hang on to the pawn. In Kasparov-Tal (Moscow Interzonal, 1982) White respond-

ed with 7.e4, but, after 7...g5 8.Bg3 b5 9.Be2 Bb7, made little headway and a draw was eventually agreed after 24 moves. 7.Qc2 Ne4 8.e3 Bb4 9.Bd3 Qa5 10.0-0! White sacrifices the c-pawn and trusts in his superior development providing compensation. 10...Nxc3 11.bxc3 Bxc3 12.Rab1 dxc4 13.Bxc4 Bb4 Black already senses a trap (14.a3) in the offing and re-routes the vulnerable bishop. 14.Ne5 Bd6 15.f4 Qc7 16.Qe4 b6 (Diag 1) Appearing to be over the worst, Black sets about freeing his queenside pieces... 17.Nxf7! ...Only to be hit by this bolt from the blue! 17...Qxf7 The queen is forced into the firing line, as 17...Kxf7 18.f5 Ke8 19.fxe6 Be7 20.Qg6+ Kd8 21.Qxg7 leaves Black's defence in tatters, but White can still continue in similar fashion. 18.f5 Qh5 19.Bxe6 Nd7 The discovered attack is ignored on the basis that the white-squared bishop, when moved, can do no lasting damage. However, White has seen further... 20.f6! Nxf6 (Diag 2). 21.Rxf6! ...and this exchange sacrifice now makes 22.Bg4+ a queen-winning possibility. Black therefore offers the piece for bishop and rook, only to find that his opponent has one final surprise in store. 21...Qxh4 22.Qxc6+! Ke7 23.Rf7+ Kxe6 24.Qc4 mate.

● Any enquiries regarding the Chess column should be addressed to Alan Dommett by emailing a.j.dommett@btinternet.com