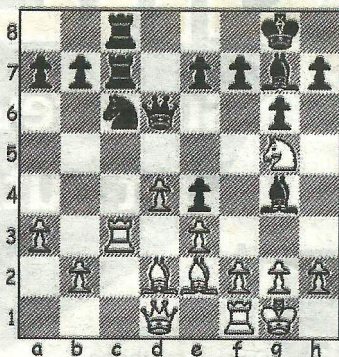


CHESS

DIAGRAM 1



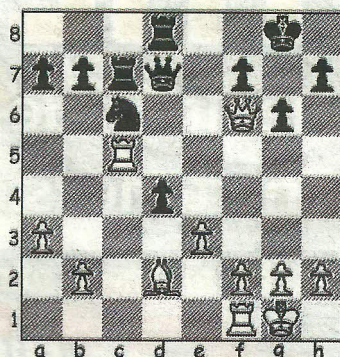
SOUTHBOURNE A are this season's Bournemouth League 1st Division champions after a clinical 3.5-0.5 win against Highcliffe A took them to an unassailable 16pts from 9 matches played and the team now travel to Wimborne A for their last fixture of the season with the title already retained. Crucial headway had previously been made in two adjourned games against Ringwood A, with Martin Simons and Ken Harman settling on a draw and Len Laker defeating Pete Donaldson, thereby putting Ringwood out of the title race.

The B&DCL Team Handicap KO competition has reached the semi-final stage and with only one of the higher graded teams surviving there is ample evidence that the handicap system is working effectively.

Quarter-final results (required score in brackets) :- Weymouth 3 Wimborne A 3 (4-2), Poole 2.5 Highcliffe 3.5 (3.5-2.5), Wimborne B 2 Dorchester 4 (1.5-4.5), Southbourne A 5.5 Ringwood 0.5 (5.5-0.5). The draw for the semi-final has already been made with Wimborne A set to face Southbourne A while Wimborne B travel to Highcliffe.

The following miniature is taken from the recent East Devon Major held at Exeter Corn Exchange where Wimborne's Jorgen Nielsen, building on this fine win, finished in second place.

DIAGRAM 2



Nielsen, J - Morrison, J
East Devon Congress, 2011
Irregular Opening (A00)

1.Nc3 c5 2.Nf3 g6 Early confirmation that Black is not keen to go down a theoretical line, whereas White is about to respond in true 1950's style, the decade that saw Theodore Dunst and Dirk Van Geet develop the opening now bearing their names. 3.e3 Bg7 4.Ne2 Nf6 5.Ng3 0-0 6.Be2 White has simply gone through the main line repertoire of moves for the opening referred to above, patiently waiting for his opponent to advance in the centre. 6...d5 7.d4 Nc6 8.c3 cxd4 9.cxd4 Bg4 Black may have a lead in development, but the white-squared bishop will look uncomfortable at g4 if the pawn chain is ever completed. The next passage of play sees a jockeying for position...10.0-0 Rc8 11.Bd2 Qd6 12.a3 Rc7 13.Rc1 Rfc8 14.Rc3 Ne4?!...eventually broken by Black trying assume the role of aggressor. 15.Nxe4 dxe4 16.Ng5 (Diag 1) Bxe2 Seizing the opportunity to swap bishops rather than retreat, but Black's e-pawn is under threat and once White recaptures 17...f5? 18.Qc4+ is fatal. 17.Qxe2 e5!? 18.Nxe4 Qd5? A cautious 18...Qe6 is better, whereupon 19.Nc5 Qd6 20.Ne4 could easily have led to a draw by repetition. 19.Qf3 Rd8 20.Rc5 Qd7 21.Nf6+ Bxf6 22.Qxf6 exd4 (Diag 2) 23.e4! It was now or never to recover the pawn, however White finds such a good reply, restricting counterplay and threatening mate with 24.Bh6, that Black blunders immediately. 23...Qe6? 24.Rxc6! Winning a piece, as 24...Rxc6 leaves the back rank rook hanging, and it was here that Black resigned.

● Any enquiries regarding the Chess column should be addressed to Alan Dommert by emailing a.j.dommert@btinter-