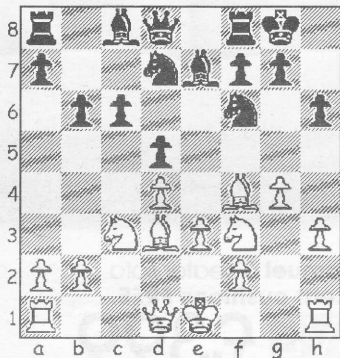


CHESS

by Alan Dommett

DIAGRAM 1



The Southbourne Christmas Tournament has been won by one of their own players, Bruce Jenks, with another well attended event attracting players from three other Bournemouth League clubs. The 7-round Swiss style event featured a time handicap favouring lower graded players, but Jenks still managed to compile an impressive 6.5/7 score to take him a full point clear of Ian Clark (Wimborne) who took the runners-up spot.

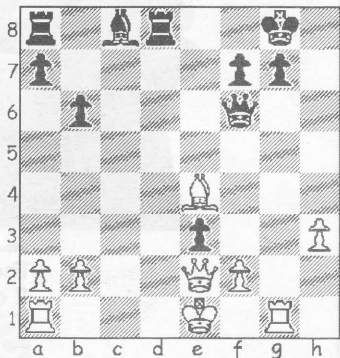
The Hastings Congress has entered its second week and top seed Romain Edouard has moved into the lead after an unexpectedly easy seventh round win against Rao Prasanna. The following game, taken from an earlier round, provides a much better example of the young Indian's talent.

Marusenko, Petr - Prasanna, R
Hastings Masters, 2010-11
Queen's Gambit Declined:
Exchange Variation (D35)

1.d4 Nf6 2.c4 e6 3.Nc3 d5
4.cxd5 exd5 5.Bg5 Be7 6.e3 h6
7.Bf4 0-0 8.Bd3 c6 9.h3 White prepares to develop his knight to f3 without fear of it being pinned, whilst at the same time providing support for a potential g4 bayonet attack on Black's kingside. 9...Nbd7 10.Nf3 b6 11.g4 (Diag1) c5!? Played with the intention of opening the c-file, thereby giving White no secure castling option.

In Cvitan-Kuchen (Bad Ragas, 1992) Black tried to blunt the attack, but, after 11...g5 12.Bg3 Bb7 13.h4 Ne4 14.Nxe4 dxe4 15.Bxe4 Nf6 16.Bf5 Bb4+ 17.Kf1, White's king

DIAGRAM 2



position proved to be the safer of the two and he went on to win in 24 moves. 12.Rg1 cxd4 13.Nxd4 Nc5 14.Nc6!?

Seizing his chance to remove a key defender with this fork and with the g-pawn advance still in the offing, White must have been fairly content with his situation at this stage... 14...Qe8 15.Nxe7+ Qxe7 16.g5 hxg5 17.Bxg5 Rd8 18.Qe2? ...but not for long, as the following passage of play sees Black slowly take the initiative away. 18...d4! 19.Bxf6 Qxf6 20.Ne4 Nxe4 21.Bxe4 dxe3! (Diag 2) 22.Qxe3 Tempting though it is, 22.Bxa8 leads to trouble after 22...exf2 23.Qxf2 Re8+ Kf1 Ba6+ 25.Kg2 Re2, when White must accept two rooks for his queen and also go a pawn down. 22...Rb8 23.Rc1 Re8 24.Bh7+?

A move that would usually win a pawn, but, as there isn't one available, it is as artificial as it looks! 24...Kf8 25.Be4 Bf5 26.f3

This was the pawn defence White was relying on, but, with his b-pawn hanging, White's king is soon in grave danger. 26...Qxb2 27.Rc4 Bxe4 28.fxe4 Capturing with the rook is no better, as 28...Rbc8 leaves White overloaded with threats to his king. 28...Qb1+ 29.Rc1 Rxe4! and, as another pawn drops, soon to be followed by a third, White edges ever closer to his resignation. 30.Rxb1 Rxe3+ 31.Kf2 Rxb3 0-1

● Any enquiries regarding the Chess column should be addressed to Alan Dommett by emailing a.j.dommett@btinternet.com