

CHESS

by Alan Dommett

6 AUG 2011

DIAGRAM 1

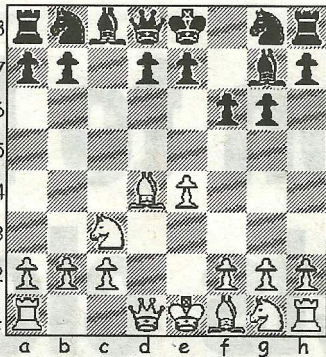
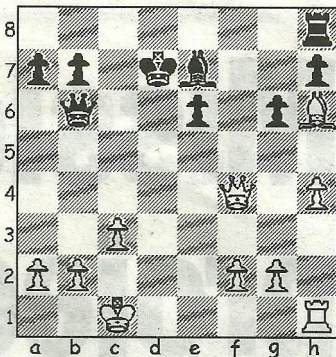


DIAGRAM 2



THERE have been mixed fortunes for the local league players competing in the British Championships in Sheffield over the last fortnight, but Bruce Jenks (Southbourne) and Paul Kemp (Highcliffe) have battled their way to very creditable 4/8 scores and now face the prospect of further high-rated opposition in the latter stages of the event.

With three rounds remaining, Martin Simons (Southbourne) has so far drawn all but one of his games to be only a half-point behind his fellow league players, while Allan Pleasants (Wimborne) is a further 1.5 points adrift having struggled to find form throughout the first week.

The following game is taken from the opening round of the Championship and Paul Kemp dismisses his opponent's unorthodox handling of the popular Sniper Defence.

Kemp, P - Phillips, O
British Championship
Sheffield, 2011 Modern Defence (B06)

1.e4 g6 2.d4 Bg7 3.Nc3 c5 4.Be3 cxd4 Releasing the tension, whereas 4...Qa5 would have maintained it. The intention is to exploit the bishop's central position to gain a tempo, but this has to be achieved with quick piece development and not the ultra-caution shown in Black's next move. 5.Bxd4 f6?! (Diag 1) 6.Bc4 In Brenninkmijer-

Hendriks (Netherlands, 1993) White chose a different plan keeping both bishops in prime position and after 6.Qd2 Nh6 7.Nd5 Nc6 8.Bc3 Nf7 9.f4 b6 10.0-0-0 Bb7 11.Nf3 Rc8 12.Kb1 his opponent blundered into 12...e6?? 13.Nxf6+ to leave a two-pawn deficit, whereupon he promptly resigned. 6...Nh6 7.h4 e6 8.Qe2 Nc6 The bishop is challenged at last, although by this time White has seized the initiative with his h-pawn advance and threatens to further embarrass Black's self-inflicted kingside pawn weaknesses. 9.Be3 f5 10.0-0-0 Bxc3? 11.Bxh6 Bf6 12.exf5 The threat materialises and as Black can ill afford to see the centre burn with his queen still in residence, she heads for pastures new and a token counter-attack. 12...Qb6 13.c3 Ne5 14.fxe6 dxe6 15.Nf3 Nxc4 16.Qxc4 Bd7 Black is close to a recovery costing only a pawn, but, such are the gaping holes in his defence, White soon conjures up another onslaught to keep the black king in the firing line. 17.Qf4 Be7 18.Ne5 0-0-0 19.Nxd7 Rxd7 20.Rxd7 Kxd7 (Diag 2) 21.Qf7! Winning the bishop, as there is no way of preventing an eventual check on the d-file. 21...Qc5 22.Be3 Qc4 23.Rd1+ Kc8 24.Qxe7 Qxa2 25.Qd7+ and, rather than continue with 25...Kb8 26.Bf4+, followed by a back rank mate, Black resigned.

● Any enquiries regarding the Chess column should be addressed to Alan Dommett by emailing a.j.dommett@btinternet.com