

CHESS

by Alan Dommett

DIAGRAM 1

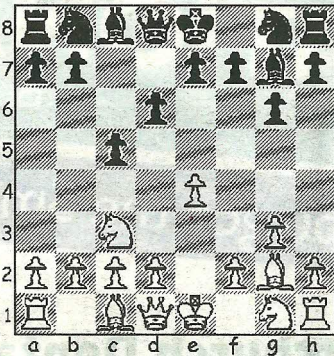
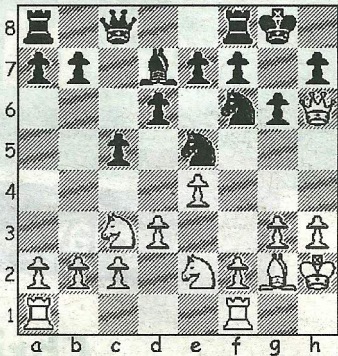


DIAGRAM 2



BOURNEMOUTH and Dorset League players are reminded that the AGMs for the Dorset Chess Association and the B&DCL will take place at Poole Royal British Legion Club (Wed 15th June) and Tuckton Social Club (Tues 5th July) respectively, with 7.30pm starts for both meetings.

In the closest of FIDE Candidates matches and with it standing at 2.5-2.5, Boris Gelfand duly took the final game against Alexander Grischuk and qualified for the right to challenge Viswanathan Anand for the world title. Playing the white side of a Gruenfeld, he won the only decisive game of the match in fine style and thereby prevented the match going into a final day of rapid and blitz play.

The following miniature, taken from the recent Frome Congress (Intermediate Section), is a fine win by Bournemouth's Paul Errington, an eventual runner-up in the event, that features some innovative opening play and a bolt-from-the-blue finish.

**Gillett, S - Errington, P**  
Frome Intermediate, 2011  
Closed Sicilian (B25)  
1.e4 c5 2.Nc3 d6 3.g3 g6  
4.Bg2 Bg7 (Diag 1) Black implements a straightforward plan against his opponent's Closed Sicilian (albeit deferred by a move) that has been expertly covered in FIDE Master Charlie Storey's new book entitled 'The Sniper' and published by

Everyman. This book provides the reader with a universal system based around ...g6, ...Bg7 and ...c5 being played as soon as possible against almost anything, and, as can be seen in this game, White soon finds himself struggling to reach the comfort zone inherent in familiar lines.

5.Nge2?! Nf6 Storey gives 5...Nh6! star billing in similar positions, presenting it as the ideal way to keep both the diagonal open and a bishop at g4 supported. Indeed, in Roos-Belkhodja (Paris, 1994), after 5.d3 Nc6 6.f4 Nh6!, the concept of sound defence (against White's own f5 threats) plus good central counterplay led to a win for Black in 30 moves. 6.d3 Nc6 7.Bd2 Bg4 8.h3 Bd7 Creating an odd symmetry on the d-file, a pattern set to continue over the next few moves. 9.0-0 0-0 10.Qc1 Qc8 11.Kh2 Ne5?! Inviting 12.f4, followed by Be3/Qd2, which would have improved his opponent's position immeasurably. Unfortunately for White, he decides on an alternative bid for greater freedom with disastrous consequences. 12.Bh6?? Bxh6 13.Qxh6 (Diag 2) Neg4+! and, with his queen destined to be lost to the second knight fork, White resigned.

● Any enquiries regarding the Chess column should be addressed to Alan Dommett by emailing [a.j.dommett@btinternet.com](mailto:a.j.dommett@btinternet.com)