

CHESS

by Alan Dommert

3 12 11

DIAGRAM 1

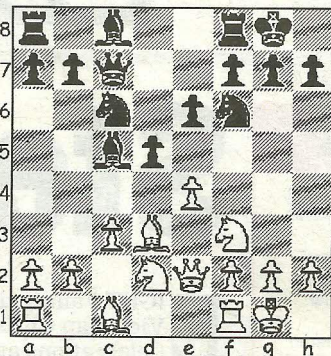
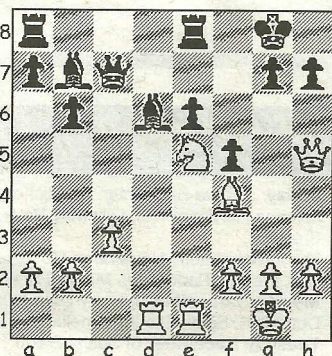


DIAGRAM 2



The 45th Torbay Congress was held last weekend and Dorset was well represented with 13 players competing in the various sections. The Open was won jointly by Keith Arkell G.M. (Chaddleton), Dominic Mackle (Newton Abbot) and Richard Webster (West Bridgeford), each on 4/5 scores, with Mike Waddington (Wimborne) putting in a creditable performance to finish a point adrift. In the Major (Under 170) event Weymouth's Ron.Burton was one of three players to share third place on a 3.5/5 score with Russell. Pegg (Southbourne) a half-point behind.

The following game is taken from the 4NCL Division 3 South opening round and British Universities CA player Adam Raof punishes his opponent's early diversion from theory in an opening that can truly be said to have stood the test of time.

Raof, A - Lyne, C

4NCL, Hinckley Island, 2011 Colle System (D05)

1.d4 Nf6 2.Nf3 e6 3.e3 d5

4.Bd3 c5 5.c3 Nc6 6.Nbd2 Bd6

7.0-0 0-0 Main line theory that

stretches back over 130 years to

the days when Joseph Henry

Blackburne was England's leading

player! 8.dxc5 Bxc5 9.e4 Qc7 10.Qe2 (Diag 1) dxe4?! This second break of central tension is not as good as the more natural re-route of the king's bishop. In Colle-Ahues (Frankfurt, 1930) 10...Bd6 11.Re1 Ng4 12.h3 Nge5 13.Nxe5 Nxe5 14.Bd1 Bd7 led to White opening the centre further with 15.exd5, but after 15...exd5 16.Nf3 Rae8 17.Be3 Nc4 18.Ng5 g6 19.Nxh7 Rxe3! Black's active minor pieces proved too powerful and he won in 25 moves. 11.Nxe4 Nxe4 12.Bxe4 f5?! Played with 13...e5 in mind and a freeing of the white-squared bishop, but leaving a hole for his opponent to fill with a dominant knight instead. 13.Bxc6 Qxc6 14.Ne5 Qc7 15.Bf4 Bd6 Somehow you sense that the bishop is a late arrival on this square and in the following passage of play White strengthens his grip on the game. 16.Rfe1 Re8 17.Rad1 b6 18.Qh5! Almost inviting Black to complete his development at last... 18...Bb7 (Diag 2) 19.Rxd6! ...only to deliver this stunning exchange sacrifice that wins outright. 19...Qxd6 20.Qf7+ Kh8 21.Ng6+ and Black, facing loss of queen for knight, resigned.

● Any enquiries regarding the Chess column should be addressed to Alan Dommert by emailing a.j.dommett@btinternet.com