

CHESS

by Alan Dommett

3 Sep 2011

DIAGRAM 1

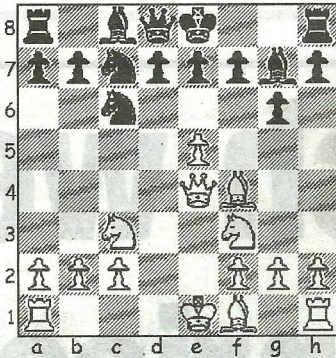
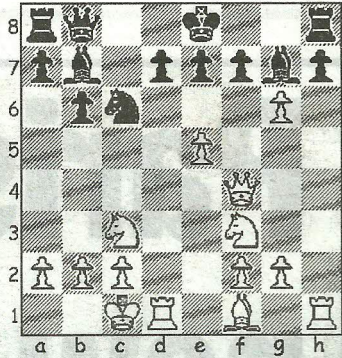


DIAGRAM 2



ENTRIES are now being taken for the 17th Dorset Rapidplay Championships, to be held on Sunday 30th October at Tuckton Social Club, and this popular tournament will be hoping to emulate last year's feat of achieving maximum attendance.

As usual, there will be plenty of cash prizes awarded plus a free buffet lunch and full details of the event can be obtained from Martin Simons (tel 01202 513504) The following miniature, taken from the last round of the British Championships, is a good example of how attempted opening transposition can be derailed by an unexpected continuation and, in all probability, some good preparation.

Jones, W - Beaumont, C
British Championship
Sheffield, 2011

Sicilian Defence (B27)

1.e4 c5 2.Nf3 g6 3.d4 cxd4

4.Qxd4 An interesting alternative to the knight capture and one that is only playable in this move order. Black now dances to his opponent's opening tune, whereas after 4.Nxd4 Bg7 5.Nc3 Nc6 6.Be3 Nf6 he can engineer a typical Sniper transposition. **4...Nf6 5.e5 Nc6 6.Qa4 Nd5 7.Qe4 Nc7 8.Bf4** Useful over-protection of the e-pawn that also leads smoothly into castling

queenside. **8...Bg7 9.Nc3 (Diag 1) b6** In Hartikainen-Ponnio (Helsinki, 1995) Black preferred to leave the a5/d8 diagonal clear for his queen, but after **9...Ne6 10.Bg3 0-0 11.0-0-0 Qa5 12.Bc4 Nc5 13.Qe3 Qb4 14.Bd5 Na4 15.Nxa4 Qxa4 16.h4!**, with little progress made, White was destined to get his attack in first and went on to win in 22 moves. **10.0-0-0 Ne6 11.h4!** Indicating that the Hartikainen game was part of his preparation, White opts for a similar attack instead of completed development... **11...Bb7 12.h5 Nxf4 13.Qxf4 Qb8?!** ...and even this added pressure on the advanced e-pawn cannot prevent the following forcing line. **14.hxg6 (Diag 2) fxg6** A pawn capture away from the centre is unusual, but **14...hxg6 15.Rxh8+ Bxh8 16.Bc4 Nd8 17.Rh1 Bg7 18.Rh7 Kf8 19.Qh2 Kg8 20.Rxg7+! Kxg7 21.Ng5** is crushing and if **16...e6**, White continues **17.Rxd7! Kxd7 18.Qxf7+ Kd8 19.Qg8+ Ke7 20.Qxe6+ Kd8 21.Qg8+ Ke7 22.Qf7+ Kd8 23.Qf8+ Kd7 24.e6+ Kc7 25.Nb5** to fashion an elegant mate. **15.Qg4!** and it was here, with **16.Qxd7+ or 16.Rxh7! Rxh7 17.Qxg6+** threatening to leave the entire seventh rank at White's mercy, that Black resigned.

● Any enquiries regarding the Chess column should be addressed to Alan Dommett by emailing a.j.dommett@btinternet.com