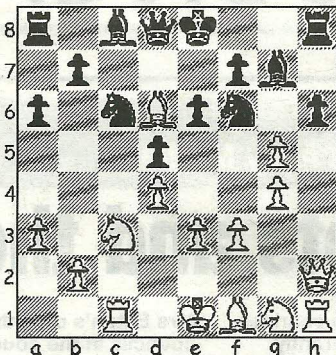


CHESS

by Alan Dommett

DIAGRAM 1



WESSEX 1 cruised into the 4NCL Division 2 Championship Pool last weekend with a crushing 7-1 victory over Kings Head that took the team to a top four position in their Divisional Pool. Southbourne players Bruce Jenks and Martin Simons contributed full points in a middle order that featured five wins whilst on top board Ringwood's Michael Yeo secured one of two draws in an impressive performance against opposition of equal rating strength.

Sadly, the team could not maintain their form in the first round of the Championship Pool that followed, going down 5.5-2.5 to a Jutes of Kent side boasting GM Simon Williams on top board.

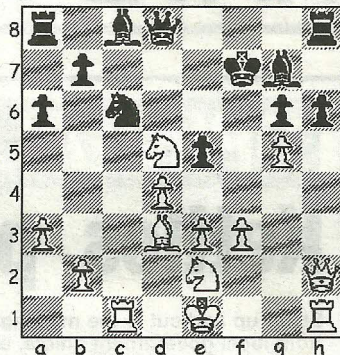
There still remains time for recovery with the last two rounds to be played at the end of this month.

Levon Aronian took clear first place in the recent Amber tournament with 15.5/22 score, a point clear of Magnus Carlsen, with an integral part of his win being an undefeated 8.5/11 score in the blindfold section. However, the following game is taken from the Rapid by a merciless attack.

Aronian, L - Gashimov, Vugar
20th Amber Rapid Monaco, 2011
Slav Defence (D10)

1.d4 d5 2.c4 c6 3.Nc3 Nf6 4.cxd5 cxd5 5.Bf4 Nc6 6.e3 a6 7.Rc1
Complete queenside development before a piece is moved on the other wing and with his next two moves Black counters by trying to muddy the waters even more! 7...Bg4 8.f3

DIAGRAM 2



Bc8 In Sorin-Juarez (Villa Ballester Siembra, 1996) Black stopped short of total retreat with 8...Bd7, but, after a similar bayonet attack to the one seen in this game, White went on to victory in 35 moves. **9.g4! g6 10.h4 h6 11.Qd2 Bg7 12.Qh2 e6?! 13.Bc7 Qe7 14.a3!?** White's expansion on the kingside has left his opponent with little breathing space and this quiet pawn push limits any scope on the other side of the board. Bereft of decent moves, Black blunders.

14...g5? 15.Bd6 Qd8 16.hxg5 (Diag 1) Ng8 With his queen now on the back rank, 16...hxg5? 17.Qxh8+ Bxh8 18.Rxh8+ Kd7 19.Rxd8+ Kxd8 loses a piece. **17.g6 fxg6 18.Bd3 Nge7 19.Nge2 Kf7** The islands of black pawns appear weak and it isn't long before material is lost. **20.Bc7 Qd7 21.Bb6 e5 22.Bc5 Re8 23.Bxe7! Qxe7** There is no way of protecting the d-pawn, as 23...Nxe7 24.Nxd5 Qxd5?? 25.Bc4 is a queen-winning pin. **24.Nxd5 Qd8 25.g5 Rh8 (Diag 2) 26.Bxg6+! Kf8** The bishop is taboo (25...hxg5? 26.Bxg6+ Kxg6 27.Qh5+ Kf5 28.Qf7+ Bf6 29.e4 mate is another example) because 26...Kxg6 27.Qh5 Kh7 28.Nf6+ Bxf6 29.Qf7+ Bg7 30.g6 is fatal. **27.Nf6 Ke7 28.Rxc6!** Sacrifices rain down on Black and his king has no hiding place. **28...bxc6 29.Qxe5+ Kf8 30.Qf4 Ke7 31.Nh7 Rxh7** Giving back the exchange, as 32.gxh6 was threatened, but White finds an intermezzo check that keeps the pawn capture alive and leads to a final winning combination. **32.Qf7+ Kd6 33.Bxh7 Qxg5 34.Rg1 Be6 35.Rxg5 1-0**

● Any enquiries regarding the Chess column should be addressed to Alan Dommett by emailing a.j.dommett@btinternet.com