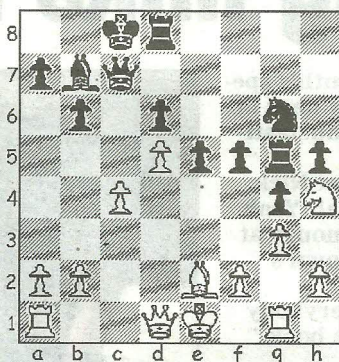


CHESS

by Alan Dommett

1 OCT 2011

DIAGRAM 1



Dorset have won the West of England Graded Jamboree, held at Taunton last week, retaining the title with an 8.5/12 score and thereby continuing an impressive run of form in this competition. East Devon (6/12), two Somerset teams (6/12 and 4/12) and Torbay (4.5/12) could not match Dorset's overall consistency over the thirty board event. Individual results:- (Dorset team names first)

F Pittman 0.5 A Kidner 0.5, P Errington 0 B Gosling 1, W Legg 1 N Mills 0, J Bowley 0 K Paine 1, W Adaway 1 J Morrison 0, D Aldwinkle 1 A Wright 0, I Willis 1 R Fenton 0, P Brackner 1 M Baker 0, J Kelly 0.5 T Tatum 0.5, K Spooner 0.5 F Hodge 0.5, N Mackie 1 B Lee 0, J George 1 R Carver 0.

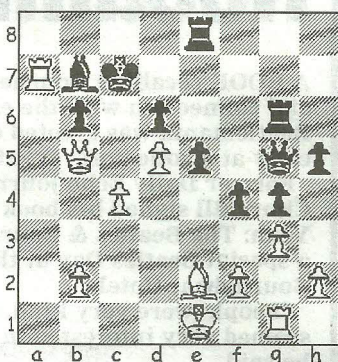
The following game is one of the four straight wins from the middle boards and Paul Brackner's unorthodox, yet sound, opening play is rewarded when his opponent's first step backwards is a blunder.

Brackner, P - Baker, M
WECU Graded Jamboree,
2011

Queen's Pawn Opening (A45)
1.d4 Nf6 2.e3 e6 3.Nd2 b6 4.Ne2?!

Black would have expected 4.Nf3, whereupon 4...Bb7 5.Bd3 builds a

DIAGRAM 2



foundation for the Torre, London and Colle Systems with the knights developed in reverse order, but now it is clear that White has no intention of treading that theoretical path. 4...Bb7 5.Nf4 c5 6.Be2 cxd4 7.exd4 Qc7 8.Nf3 Bd6 9.g3 g5?! Tempting, although not as solid as castling short because, as the next passage of play shows, little headway can be made on the kingside as a direct result of this bayonet attack. 10.Ng2 g4 11.Nfh4 Rg8 12.Rg1 Nc6 13.c3 0-0-0 14.Ne3 h5 Although Black wants to take the game to his opponent he can do little more than support the g-pawn... 15.Nc4 Be7 16.Bf4 d6 17.Ng2 e5 ... waiting for his chance to advance in the centre. 18.Bc1 Nd5 19.Nce3 Nxe3 20.Bxe3 Bg5 21.d5 Ne7 22.c4 f5 The opportunity duly arises, but White can liquidate further to ease the pressure. 23.Bxg5 Rxg5 24.Nh4 Ng6 (Diag 1) Offering another minor piece exchange and the first sign that Black is accepting the enormity of his task. For example, 24...f4 25.Qd2 Rf8 26.Ng2 Rg5 27.Nh4 Rg5 is an alternative that lends itself to a draw by repetition. 25.Nxg6 Rxg6 26.Qd2 Qe7 27.a4!? Just as Black appears punched out on one wing, White senses blood on the other! 27...Re8 28.a5 f4 29.axb6 axb6 30.Qb4! White's attack is now in full swing, whereas Black is blocked off at every turn by pawns. 30...Kc7 31.Ra7 Qg5 32.Qb5 (Diag 2) Qd8?? 33.Qc6+ and, retreating for the first time to defend his rook, Black misses the deadliest of checks followed by a back rank mate.

● Any enquiries regarding the Chess column should be addressed to Alan Dommett by emailing a.j.dommett@btinter-