

5/3/11

DIAGRAM 1

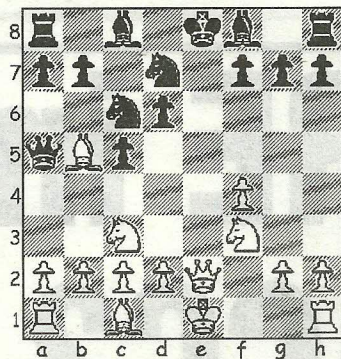
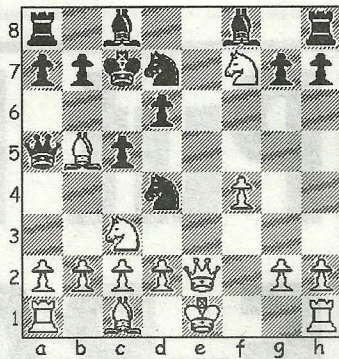


DIAGRAM 2



RINGWOOD A have kept themselves in the Bournemouth League 1st Division title race with a narrow 2.5-1.5 victory over Wimborne B. The match was always close with three drawn games leaving the top board as a deciding contest in which Wimborne's Graham Willetts obtained a strong attacking position against Ieuan Ward, only for him to run short of time and blunder away the exchange before resigning soon after.

World Champion Viswanathan Anand has returned to the top of the current FIDE ratings, overtaking Magnus Carlsen, after a superior result in the Wijk aan Zee tournament. Anand is now two points ahead of Carlsen with Levon Aronian and Vladimir Kramnik in third and fourth places.

It is a sobering thought that England's highest rated GM Michael Adams is now down in thirtieth position.

The following miniature, taken from the Dorset Closed Congress, is a quickly-learned lesson on the risks to be run when straying too far from the recognised path known as opening theory.

Jenks, B - Laker, L
Dorset Closed, 2011
Closed Sicilian (B23)
1.e4 c5 2.Nc3 Nc6 3.f4 d6 4.Nf3 Nf6 5.Bb5 A pin on the knight that usually signals the standard Anti-Sicilian approach, after 5...Bd7 6.Bxc6 Bxc6 followed by 7.d3,

whereupon White deploys a straightforward strategy of castling short and transferring his queen (via e1/h4) to the kingside. However, in this instance Black decides to ignore the pin altogether and as a result runs into serious trouble 5...Qa5? 6.e5! Nd7 7.exd6 exd6 8.Qe2+ (Diag 1) Kd8?? Black commits his king to the centre with undue haste! Fearful of the sharp tactics surrounding 8...Be7 9.Nd5!?, when 9...Qxb5?? 10.Nc7+ is an accident waiting to happen and 9...0-0? 10.Bxc6 bxc6 11.Nxe7+ loses a piece, he misses 9...Qd8, a subtle retreat that solves both problems. Indeed, after 10.0-0 a6 11.Bxc6 bxc6 12.Nxe7 Qxe7 13.Qxe7+ Kxe7 14.Re1+ Kf8, White has no more than a slight edge. 9.Ng5 Nd4? 10.Nxf7+ White realises the intermezzo check can be given... 10...Kc7 (Diag 2) 11.Qe8! ...as 12.Qd8+ threatens to win Black's queen and now there is no way of preventing heavy material loss. 11...Be7 12.Qxh8 Nxc2+ 13.Kd1 Nf6 Just to make matters worse for Black, the immediate 13...Nxa1? does not recover a rook, because 14.Nd5+ Kb8 15.Bxd7 is fatal, and the enforced delay over the capture soon led to his resignation. 14.Qxg7 Nxa1 15.Nh6 1-0

● Any enquiries regarding the Chess column should be addressed to Alan Dommert at a.j.dommert@btinternet.com